

# AKT1 antibody

Catalog Number: 107947

## Product name

AKT1 antibody

IHC: 1:20-1:200

IF: 1:10-1:100

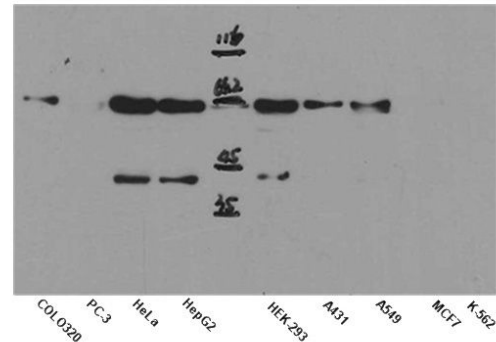
## Specificity

Human; other species not tested.

## Validations

## Antibody description

AKT1 Rabbit Polyclonal antibody. Positive WB detected in multi-cells, COLO 320 cells. Positive IHC detected in human breast cancer tissue, human cervical cancer tissue. Positive IF detected in HeLa cells. Observed molecular weight by Western-blot: 62kd



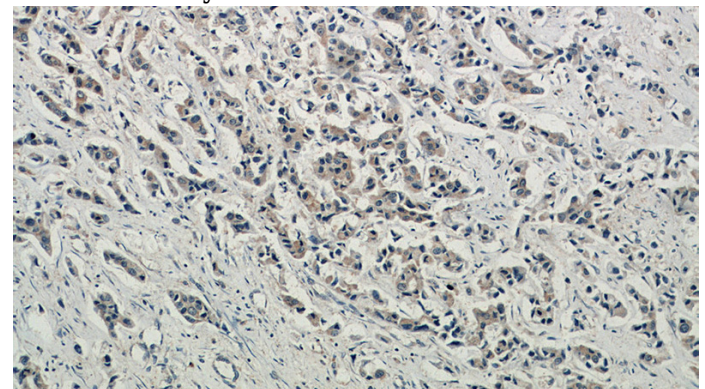
## Preparation

This antibody was obtained by immunization of Peptide (Accession Number: XM\_005267401). Purification method: Antigen affinity purified.

WB result of anti-AKT1 (Catalog No:107947) in different cell lysates.

## Formulation

PBS with 0.02% sodium azide and 50% glycerol pH 7.3.



## Storage

Store at -20°C. DO NOT ALIQUOT

## Clonality

Polyclonal

Immunohistochemical of paraffin-embedded human breast cancer using Catalog No:107947(AKT1 antibody) at dilution of 1:50 (under 10x lens)

## Ig Type

Rabbit IgG

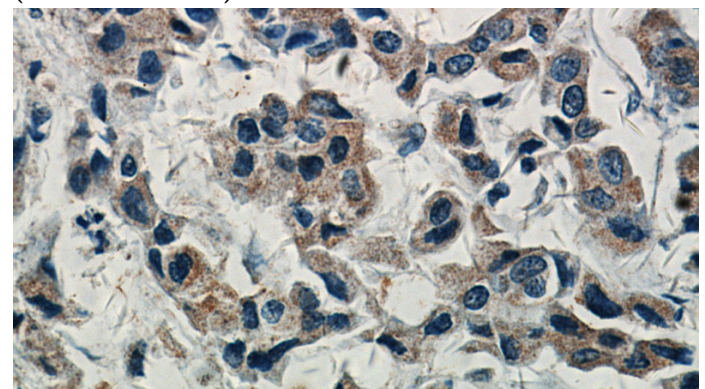
## Applications

ELISA, IHC, WB, IF

## Dilutions

Recommended Dilution:

WB: 1:200-1:2000



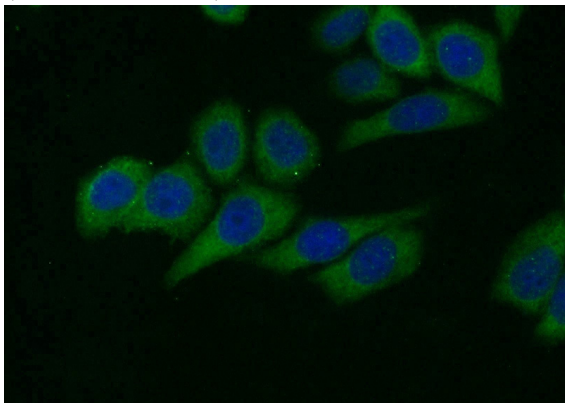
Immunohistochemical of paraffin-embedded human breast cancer using Catalog

# AKT1 antibody

Catalog Number: 107947

---

No:107947(AKT1 antibody) at dilution of 1:50  
(under 40x lens)



Immunofluorescent analysis of HeLa cells using  
Catalog No:107947(AKT1 Antibody) at dilution of  
1:25 and Alexa Fluor 488-conjugated AffiniPure  
Goat Anti-Rabbit IgG(H+L)