

AKAP1 antibody



Catalog Number: 107927

Product name

AKAP1 antibody

Recommended Dilution:

WB: 1:500-1:5000

Specificity

Human; other species not tested.

IP: 1:1000-1:10000

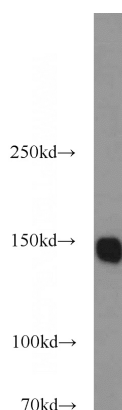
IHC: 1:20-1:200

Antibody description

AKAP1 Rabbit Polyclonal antibody. Positive FC detected in MCF-7 cells. Positive IF detected in MCF-7 cells. Positive IHC detected in human colon cancer tissue, human prostate cancer tissue, human small intestine tissue. Positive IP detected in PC-3 cells. Positive WB detected in HeLa cells, human liver tissue, PC-3 cells. Observed molecular weight by Western-blot: 149 kDa

IF: 1:10-1:100

Validations



Preparation

This antibody was obtained by immunization of AKAP1 recombinant protein (Accession Number: XM_005257709). Purification method: Antigen affinity purified.

HeLa cells were subjected to SDS PAGE followed by western blot with Catalog No:107927(AKAP1 antibody) at dilution of 1:1000

Formulation

PBS with 0.02% sodium azide and 50% glycerol pH 7.3.

Storage

Store at -20°C. DO NOT ALIQUOT

Clonality

Polyclonal

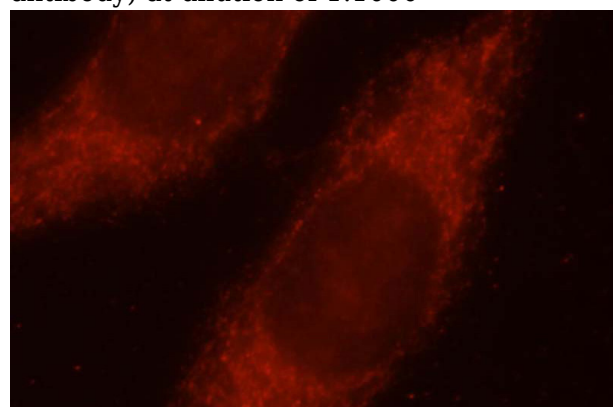
Ig Type

Rabbit IgG

Applications

ELISA, WB, IF, IHC, FC, IP

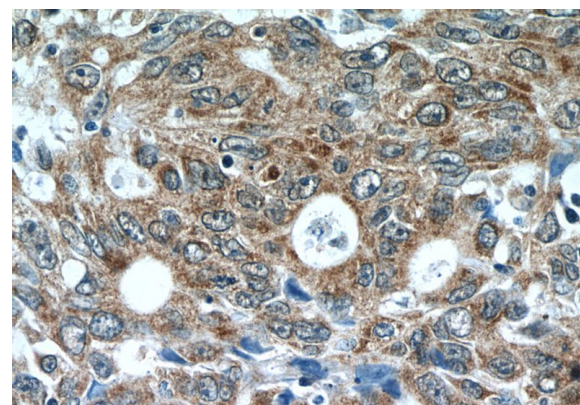
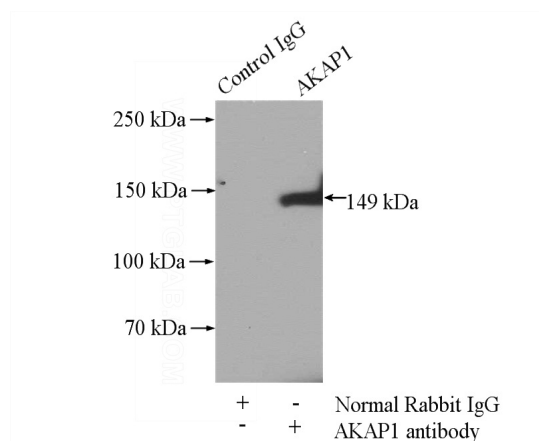
Dilutions



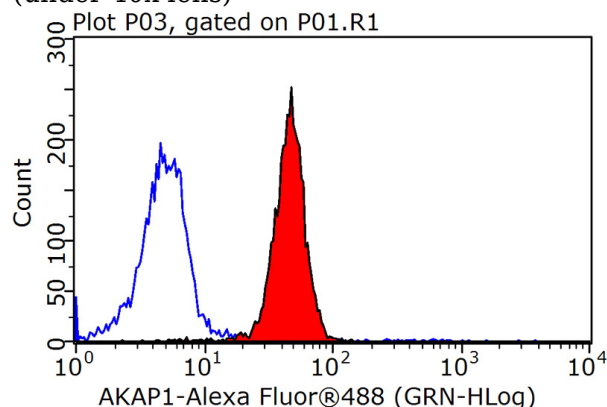
Immunofluorescent analysis of MCF-7 cells, using AKAP1 antibody Catalog No:107927 at 1:25 dilution and Rhodamine-labeled goat anti-rabbit

AKAP1 antibody

Catalog Number: 107927



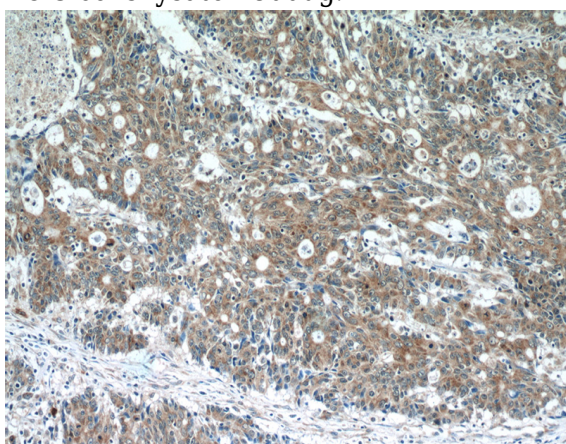
Immunohistochemistry of paraffin-embedded human colon cancer tissue slide using Catalog No:107927(AKAP1 Antibody) at dilution of 1:50 (under 40x lens)



1X10⁶ MCF-7 cells were stained with 0.2ug AKAP1 antibody (Catalog No:107927, red) and control antibody (blue). Fixed with 90% MeOH blocked with 3% BSA (30 min). Alexa Fluor 488-conjugated AffiniPure Goat Anti-Rabbit IgG(H+L) with dilution 1:1500.

IgG (red).

IP Result of anti-AKAP1 (IP:Catalog No:107927, 4ug; Detection:Catalog No:107927 1:2000) with PC-3 cells lysate 1800ug.



Immunohistochemistry of paraffin-embedded human colon cancer tissue slide using Catalog No:107927(AKAP1 Antibody) at dilution of 1:50 (under 10x lens)