

AEG-1/MTDH-Specific antibody



Catalog Number: 107899

General Information

Product name:

AEG-1/MTDH-Specific antibody

Immunogen:

[Human AEG-1 Recombinant protein \(GST tag\)](#)

Applications:

ELISA, WB, IHC, IF, IP

Specificity:

Human, Mouse, Rat; other species not tested.

Antibody description:

AEG-1/MTDH-Specific Rabbit Polyclonal antibody. Positive IP detected in MCF-7 cells. Positive WB detected in MCF7 cells, A375 cells, A549 cells, DU 145 cells, HeLa cells, HepG2 cells, PC-3 cells, RAW 264.7 cells. Positive IHC detected in human prostate cancer tissue, human breast cancer tissue, human liver cancer tissue, human stomach cancer tissue, mouse brain tissue. Positive IF detected in MCF-7 cells. Observed molecular weight by Western-blot: 65-70 kDa

Properties

Preparation:

This antibody was obtained by immunization of AEG-1/MTDH-Specific recombinant protein (Accession Number: NM_178812). Purification method: Antigen affinity purified.

Formulation:

PBS with 0.02% sodium azide and 50% glycerol pH 7.3.

Storage:

Store at -20°C. DO NOT ALIQUOT

Clonality:

Polyclonal

Ig Type: Rabbit IgG

Applications

Recommended Dilution:

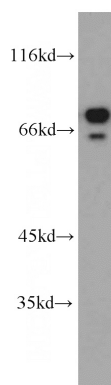
WB: 1:500-1:5000

IP: 1:500-1:5000

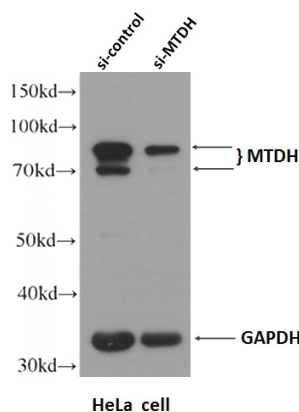
IHC: 1:20-1:200

IF: 1:20-1:200

Validations



MCF7 cells were subjected to SDS PAGE followed by western blot with Catalog No:107899(AEG-1 antibody) at dilution of 1:1000

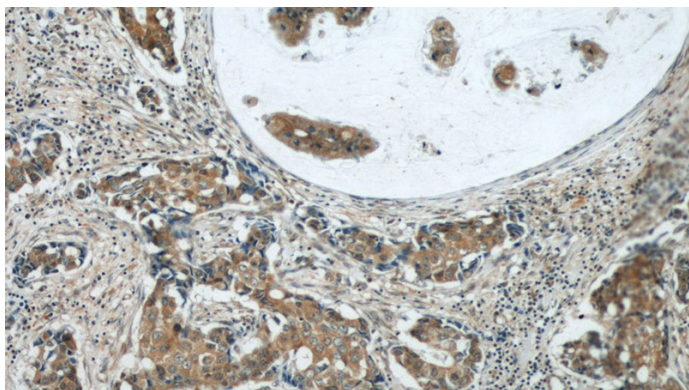


WB result of AEG-1/MTDH antibody (Catalog No:107899, 1:2000) with si-Control and si-MTDH

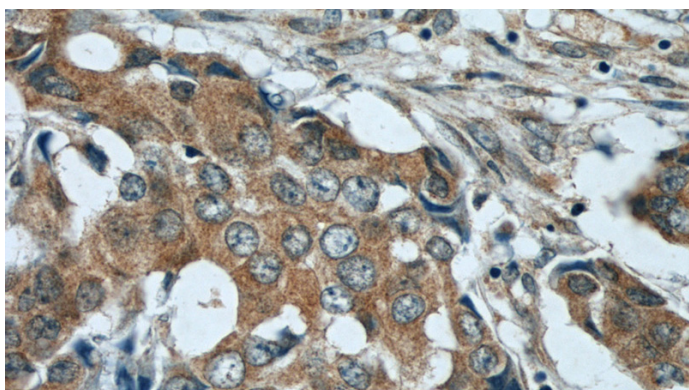
AEG-1/MTDH-Specific antibody

Catalog Number: 107899

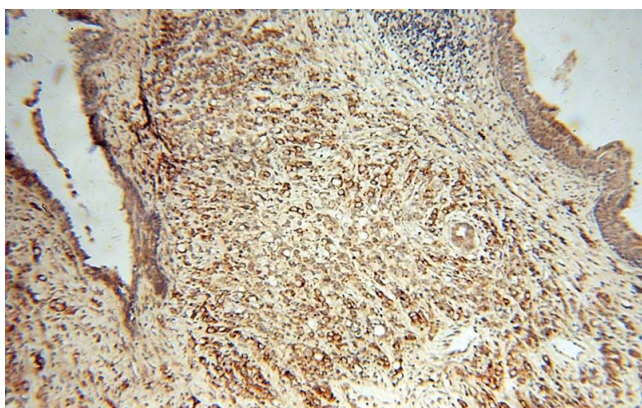
transfected A549 cells.



Immunohistochemical of paraffin-embedded human breast cancer using Catalog No:107899(AEG-1 antibody) at dilution of 1:50 (under 10x lens)

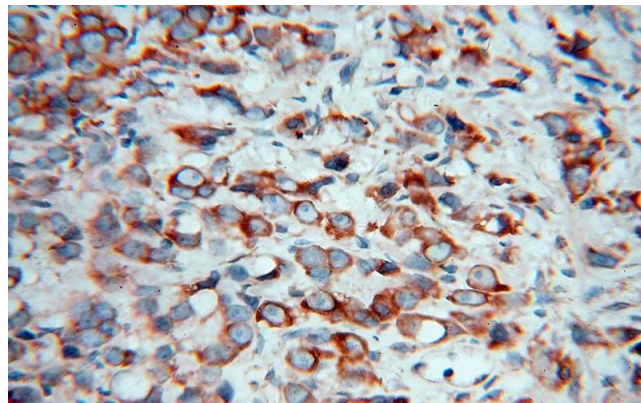


Immunohistochemical of paraffin-embedded human breast cancer using Catalog No:107899(AEG-1 antibody) at dilution of 1:50 (under 40x lens)

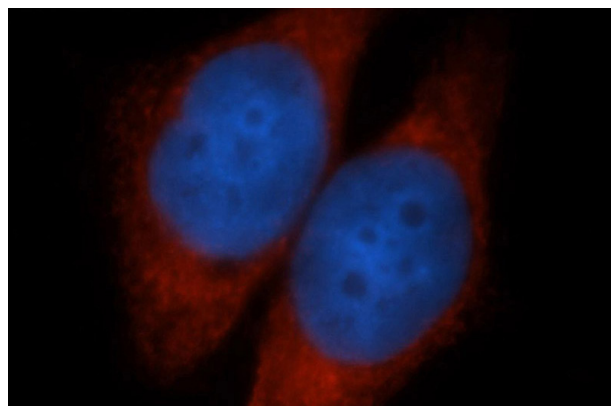


Immunohistochemical of paraffin-embedded human prostate cancer using Catalog

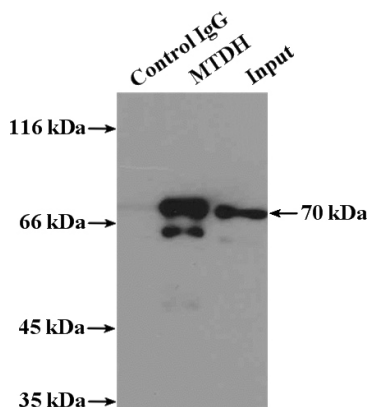
No:107899(AEG-1 antibody) at dilution of 1:100 (under 10x lens)



Immunohistochemical of paraffin-embedded human prostate cancer using Catalog No:107899(AEG-1 antibody) at dilution of 1:100 (under 40x lens)



Immunofluorescent analysis of MCF-7 cells, using MTDH antibody Catalog No:107899 at 1:50 dilution and Rhodamine-labeled goat anti-rabbit IgG (red). Blue pseudocolor = DAPI (fluorescent DNA dye).



AEG-1/MTDH-Specific antibody



Catalog Number: 107899

IP Result of anti-AEG-1 (IP:Catalog No:107899,

3ug; Detection:Catalog No:107899 1:1000) with
MCF-7 cells lysate 3250ug.