

# ADRA1A-Specific antibody



Catalog Number: 107888

## Product name

ADRA1A-Specific antibody

## Specificity

Human, Mouse, Rat; other species not tested.

## Antibody description

ADRA1A-Specific Rabbit Polyclonal antibody. Positive FC detected in HepG2 cells. Positive WB detected in mouse brain tissue, mouse heart tissue. Observed molecular weight by Western-blot: 52 kDa

## Preparation

This antibody was obtained by immunization of Peptide (Accession Number: NM\_000680). Purification method: Antigen affinity purified.

## Formulation

PBS with 0.02% sodium azide and 50% glycerol pH 7.3.

## Storage

Store at -20°C. DO NOT ALIQUOT

## Clonality

Polyclonal

## Ig Type

Rabbit IgG

## Applications

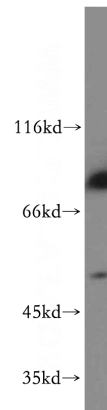
ELISA, WB, FC

## Dilutions

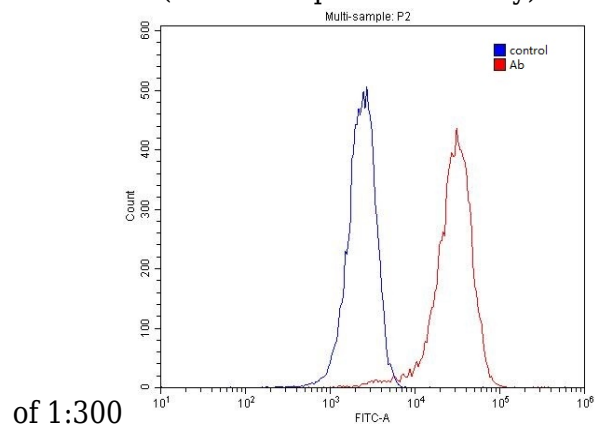
Recommended Dilution:

WB: 1:500-1:5000

## Validations



mouse brain tissue were subjected to SDS PAGE followed by western blot with Catalog No:107888(ADRA1A-Specific antibody) at dilution



of 1:300

1X10<sup>6</sup> HepG2 cells were stained with 0.2ug ADRA1A-Specific antibody (Catalog No:107888, red) and control antibody (blue). Fixed with 4% PFA blocked with 3% BSA (30 min). Alexa Fluor 488-conjugated AffiniPure Goat Anti-Rabbit IgG(H+L) with dilution 1:1500.