

# ACAD10 antibody



Catalog Number: 107825

## Product name

ACAD10 antibody

## Immunogen

[Human ACAD10 Recombinant protein \(His tag\)](#)

## Specificity

Human, Mouse, Rat; other species not tested.

## Antibody description

ACAD10 Rabbit Polyclonal antibody. Positive IHC detected in human pancreas tissue. Positive IF detected in Hela cells. Positive WB detected in mouse spleen tissue. Observed molecular weight by Western-blot: 119kd

## Preparation

This antibody was obtained by immunization of ACAD10 recombinant protein (Accession Number: BC015056). Purification method: Antigen affinity purified.

## Formulation

PBS with 0.02% sodium azide and 50% glycerol pH 7.3.

## Storage

Store at -20°C. DO NOT ALIQUOT

## Clonality

Polyclonal

## Ig Type

Rabbit IgG

## Applications

ELISA, WB, IHC, IF

## Dilutions

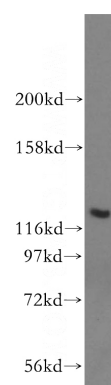
Recommended Dilution:

WB: 1:200-1:2000

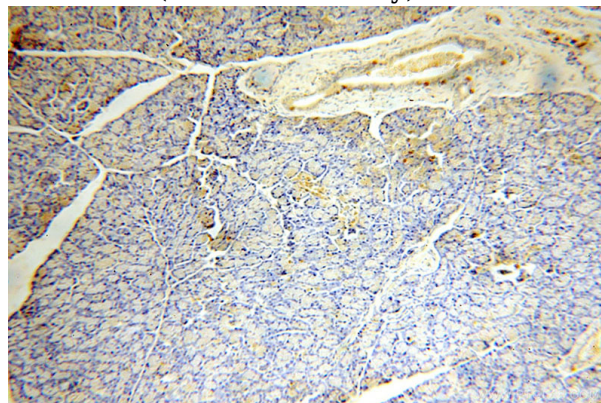
IHC: 1:20-1:200

IF: 1:10-1:100

## Validations



mouse spleen tissue were subjected to SDS PAGE followed by western blot with Catalog No:107825(ACAD10 antibody) at dilution of 1:300

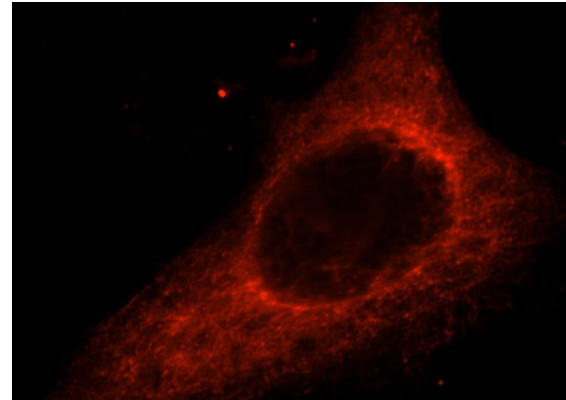
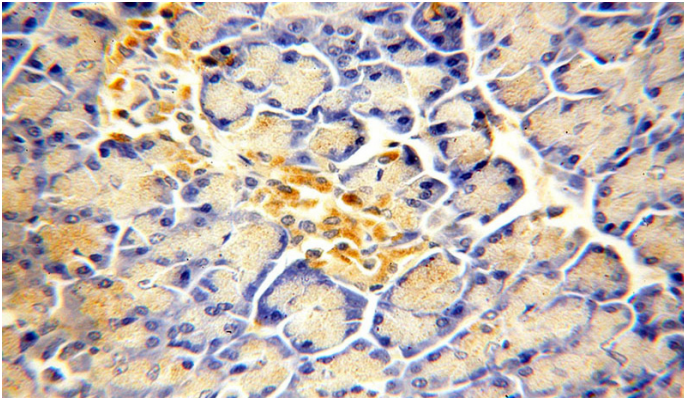


Immunohistochemical of paraffin-embedded human pancreas using Catalog No:107825(ACAD10 antibody) at dilution of 1:100 (under 10x lens)

# ACAD10 antibody

Catalog Number: 107825

---



Immunohistochemical of paraffin-embedded human pancreas using Catalog No:107825(ACAD10 antibody) at dilution of 1:100 (under 40x lens)

Immunofluorescent analysis of HeLa cells, using ACAD10 antibody Catalog No:107825 at 1:25 dilution and Rhodamine-labeled goat anti-rabbit IgG (red).