

acid phosphatase, prostate antibody



Catalog Number: 107739

Product name

acid phosphatase, prostate antibody

Specificity

Human; other species not tested.

Antibody description

acid phosphatase, prostate Rabbit Polyclonal antibody. Positive WB detected in Transfected HEK-293 cells. Positive IHC detected in human prostate cancer tissue.

Preparation

This antibody was obtained by immunization of acid phosphatase, prostate recombinant protein (Accession Number: NM_001134194). Purification method: Antigen affinity purified.

Formulation

PBS with 0.1% sodium azide and 50% glycerol pH 7.3.

Storage

Store at -20°C. DO NOT ALIQUOT

Clonality

Polyclonal

Ig Type

Rabbit IgG

Applications

ELISA, IHC, WB

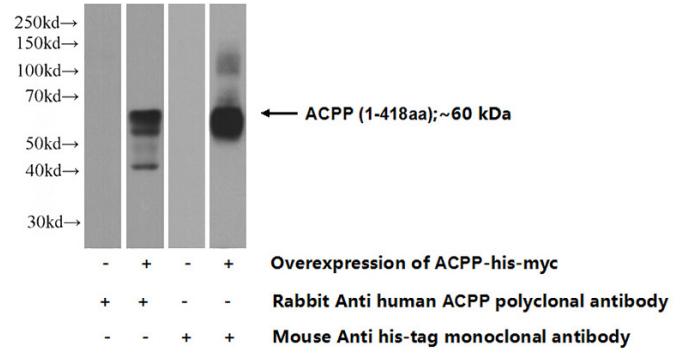
Dilutions

Recommended Dilution:

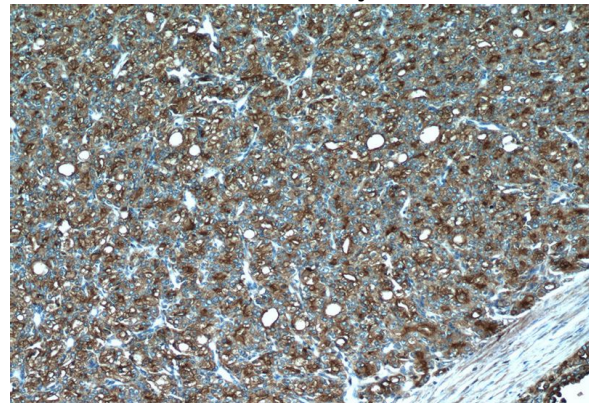
WB: 1:1000-1:10000

IHC: 1:20-1:200

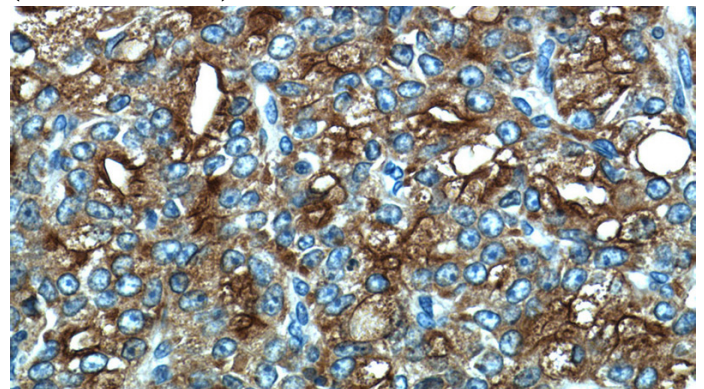
Validations



Transfected HEK-293 cells were subjected to SDS PAGE followed by western blot with Catalog No:107739(ACPP Antibody) at dilution of 1:2000



Immunohistochemistry of paraffin-embedded human prostate cancer tissue slide using Catalog No:107739(ACPP Antibody) at dilution of 1:50 (under 10x lens)



Immunohistochemistry of paraffin-embedded human prostate cancer tissue slide using Catalog No:107739(ACPP Antibody) at dilution of 1:50 (under 40x lens)