

# ACADL antibody



Catalog Number: 107718

## Product name

ACADL antibody

WB: 1:500-1:5000

IHC: 1:20-1:200

## Specificity

Human, Mouse; other species not tested.

## Antibody description

ACADL Rabbit Polyclonal antibody. Positive WB detected in mouse kidney tissue, HEK-293 cells, HeLa cells, HepG2 cells, NIH/3T3 cells. Positive IHC detected in human kidney tissue, human liver tissue. Observed molecular weight by Western-blot: 45-48 kDa

## Preparation

This antibody was obtained by immunization of ACADL recombinant protein (Accession Number: NM\_001608). Purification method: Antigen affinity purified.

## Formulation

PBS with 0.02% sodium azide and 50% glycerol pH 7.3.

## Storage

Store at -20°C. DO NOT ALIQUOT

## Clonality

Polyclonal

## Ig Type

Rabbit IgG

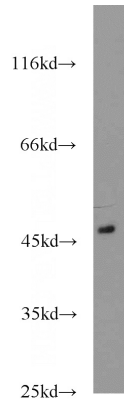
## Applications

ELISA, WB, IHC

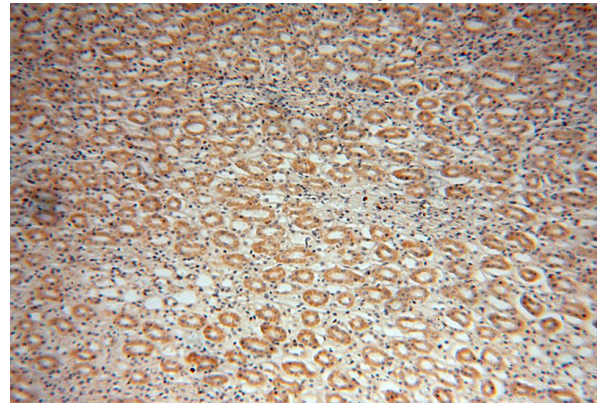
## Dilutions

Recommended Dilution:

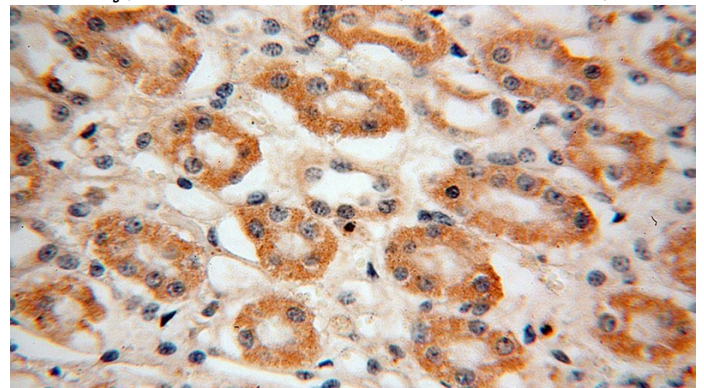
## Validations



mouse kidney tissue were subjected to SDS PAGE followed by western blot with Catalog No:107718(ACADL antibody) at dilution of 1:1000



Immunohistochemical of paraffin-embedded human kidney using Catalog No:107718(ACADL antibody) at dilution of 1:50 (under 10x lens)



Immunohistochemical of paraffin-embedded human kidney using Catalog No:107718(ACADL antibody) at dilution of 1:50 (under 40x lens)