

# ACTL6A antibody

Catalog Number: 107707

## Product name

ACTL6A antibody

IP: 1:200-1:2000

IHC: 1:20-1:200

## Specificity

Human, Mouse, Rat; other species not tested.

## Antibody description

ACTL6A Rabbit Polyclonal antibody. Positive IHC detected in human ovary tissue. Positive IP detected in HeLa cells. Positive WB detected in K-562 cells, HeLa cells. Observed molecular weight by Western-blot: 45-51kd

## Preparation

This antibody was obtained by immunization of ACTL6A recombinant protein (Accession Number: NM\_004301). Purification method: Antigen affinity purified.

## Formulation

PBS with 0.1% sodium azide and 50% glycerol pH 7.3.

## Storage

Store at -20°C. DO NOT ALIQUOT

## Clonality

Polyclonal

## Ig Type

Rabbit IgG

## Applications

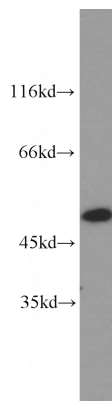
ELISA, WB, IHC, IP

## Dilutions

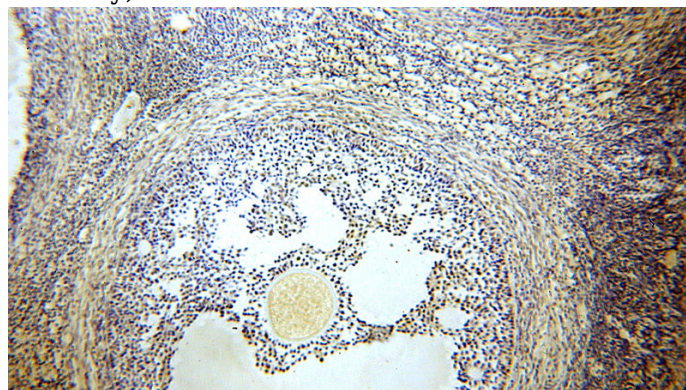
Recommended Dilution:

WB: 1:500-1:5000

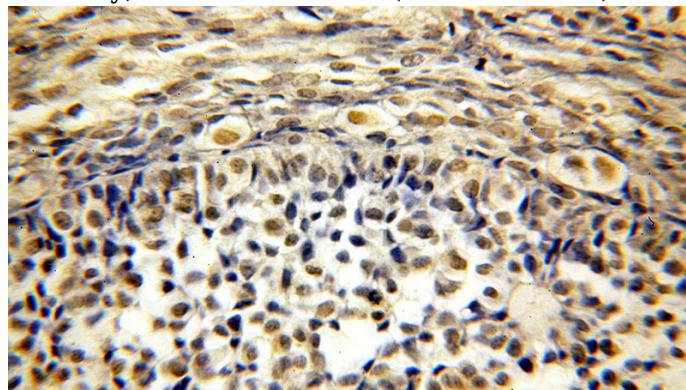
## Validations



K-562 cells were subjected to SDS PAGE followed by western blot with Catalog No:107707(ACTL6A antibody) at dilution of 1:1000



Immunohistochemical of paraffin-embedded human ovary using Catalog No:107707(ACTL6A antibody) at dilution of 1:50 (under 10x lens)



Immunohistochemical of paraffin-embedded human ovary using Catalog No:107707(ACTL6A

# ACTL6A antibody

Catalog Number: 107707

---

antibody) at dilution of 1:50 (under 40x lens)

IP Result of anti-ACTL6A (IP:Catalog No:107707, 4ug; Detection:Catalog No:107707 1:500) with HeLa cells lysate 1200ug.

