

# AARE antibody

Catalog Number: 107674

## Product name

AARE antibody

## Specificity

Human, Mouse, Rat; other species not tested.

## Antibody description

AARE Rabbit Polyclonal antibody. Positive IHC detected in human liver tissue. Positive WB detected in mouse liver tissue, COLO 320 cells, HeLa cells, Jurkat cells. Observed molecular weight by Western-blot: 66-80kd

## Preparation

This antibody was obtained by immunization of AARE recombinant protein (Accession Number: NM\_001640). Purification method: Antigen affinity purified.

## Formulation

PBS with 0.02% sodium azide and 50% glycerol pH 7.3.

## Storage

Store at -20°C. DO NOT ALIQUOT

## Clonality

Polyclonal

## Ig Type

Rabbit IgG

## Applications

ELISA, WB, IHC

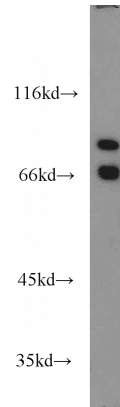
## Dilutions

Recommended Dilution:

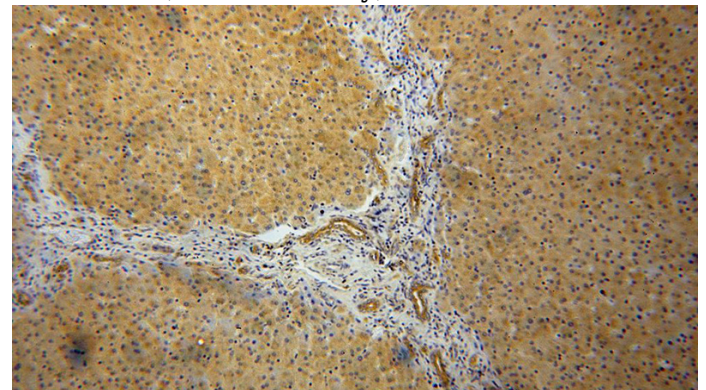
WB: 1:500-1:5000

IHC: 1:20-1:200

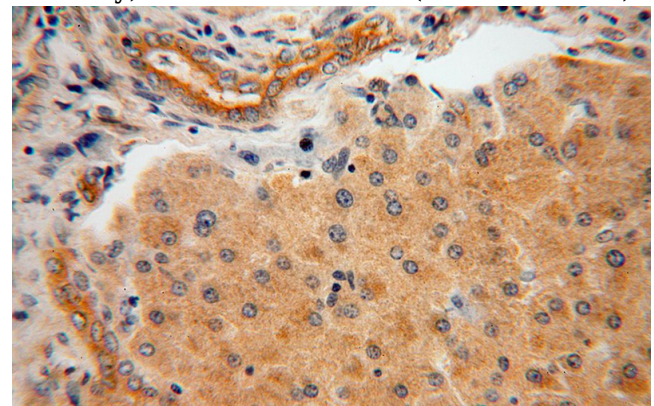
## Validations



mouse liver tissue were subjected to SDS PAGE followed by western blot with Catalog No:107674(APEH antibody) at dilution of 1:1000



Immunohistochemical of paraffin-embedded human liver using Catalog No:107674(APEH antibody) at dilution of 1:100 (under 10x lens)



Immunohistochemical of paraffin-embedded human liver using Catalog No:107674(APEH antibody) at dilution of 1:100 (under 40x lens)