

**Product name**

ubiquitin antibody

IHC: 1:20-1:200

IF: 1:10-1:100

**Specificity**

Human; other species not tested.

**Antibody description**

ubiquitin Mouse Monoclonal antibody. Positive IHC detected in human ovary tumor tissue, human breast cancer tissue, human pancreas tissue. Positive IF detected in HeLa cells. Positive WB detected in HeLa cells. Observed molecular weight by Western-blot: 25 kDa

**Preparation**

This antibody was obtained by immunization of ubiquitin recombinant protein (Accession Number: NM\_001281718). Purification method: Protein G purified.

**Formulation**

PBS with 0.02% sodium azide and 50% glycerol pH 7.3.

**Storage**

Store at -20°C. DO NOT ALIQUOT

**Clonality**

Monoclonal

**Ig Type**

Mouse IgG1

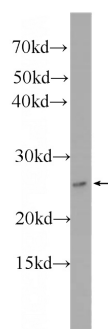
**Applications**

ELISA, IF, WB, IHC

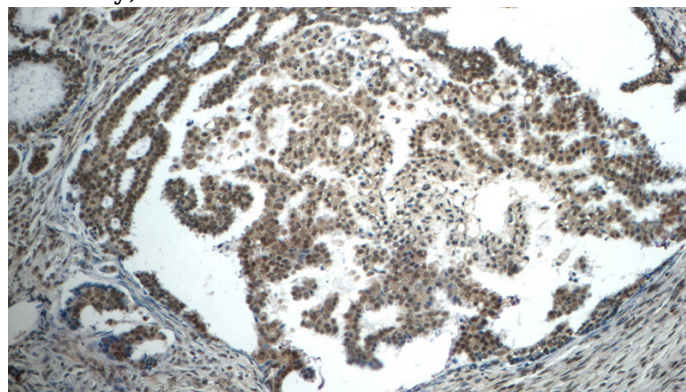
**Dilutions**

Recommended Dilution:

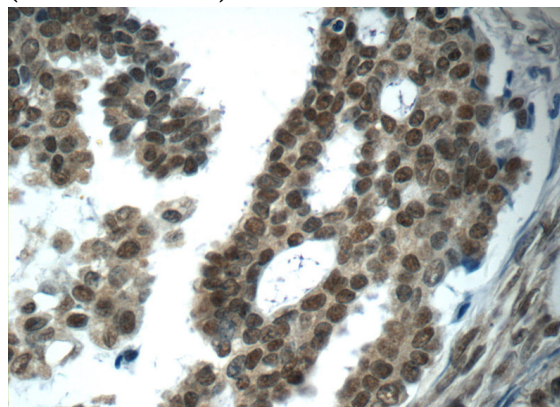
WB: 1:500-1:5000

**Validations**

HeLa cells were subjected to SDS PAGE followed by western blot with Catalog No:107655(ubiquitin Antibody) at dilution of 1:1000

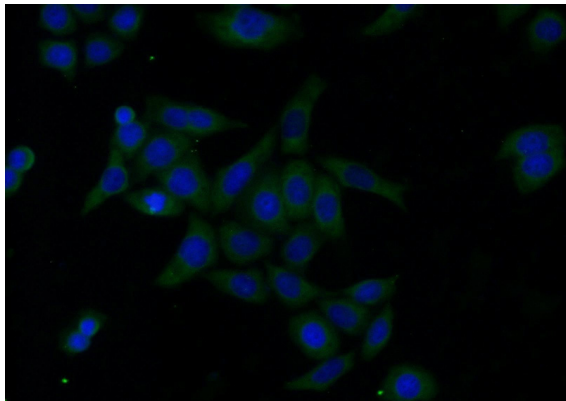


Immunohistochemistry of paraffin-embedded human ovary tumor tissue slide using Catalog No:107655(ubiquitin Antibody) at dilution of 1:50 (under 10x lens)



Immunohistochemistry of paraffin-embedded

human ovary tumor tissue slide using Catalog No:107655(ubiquitin Antibody) at dilution of 1:50 (under 40x lens)



Immunofluorescent analysis of HeLa cells using Catalog No:107655(ubiquitin Antibody) at dilution of 1:25 and Alexa Fluor 488-conjugated AffiniPure Goat Anti-Mouse IgG(H+L)