

SMN (Human-Specific) antibody



Catalog Number: 107594

Product name

SMN (Human-Specific) antibody

WB: 1:200-1:2000

IP: 1:200-1:2000

Specificity

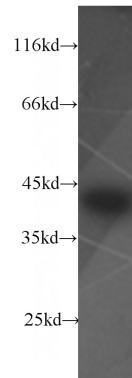
Human; other species not tested.

IHC: 1:20-1:200

Antibody description

SMN (Human-Specific) Mouse Monoclonal antibody. Positive WB detected in Raji cells, HepG2 cells. Positive IP detected in HEK-293 cells. Positive IHC detected in human brain tissue, human heart tissue, human kidney tissue, human liver tissue. Observed molecular weight by Western-blot: 38 kDa

Validations



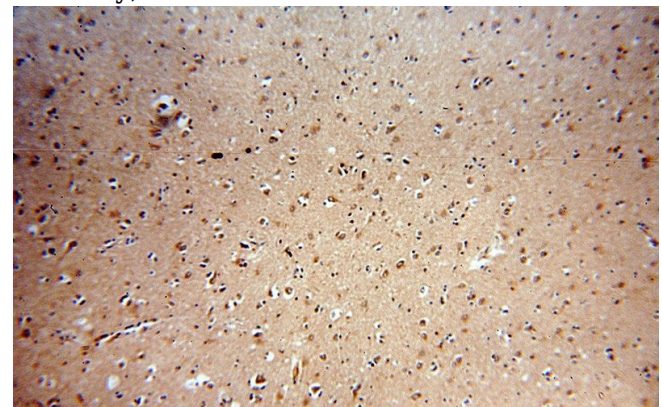
Preparation

This antibody was obtained by immunization of SMN (Human-Specific) recombinant protein (Accession Number: NM_022875). Purification method: Protein A purified.

Raji cells were subjected to SDS PAGE followed by western blot with Catalog No:107594(SMN2 antibody) at dilution of 1:400

Formulation

PBS with 0.1% sodium azide and 50% glycerol pH 7.3.



Storage

Store at -20°C. DO NOT ALIQUOT

Clonality

Monoclonal

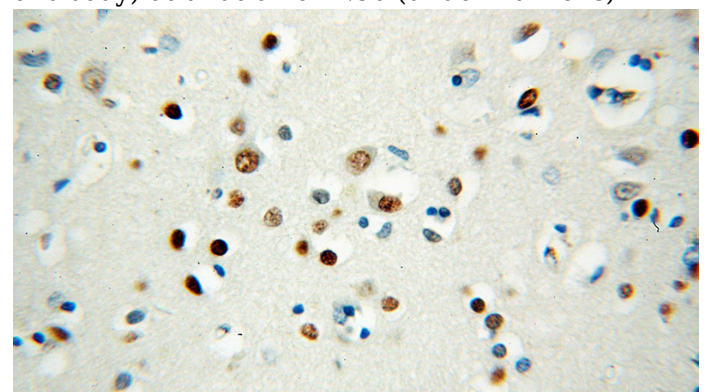
Immunohistochemical of paraffin-embedded human brain using Catalog No:107594(SMN2 antibody) at dilution of 1:50 (under 10x lens)

Ig Type

Mouse IgG2a

Applications

ELISA, WB, IHC, IP



Dilutions

Recommended Dilution:

SMN (Human-Specific) antibody



Catalog Number: 107594

Immunohistochemical of paraffin-embedded human brain using Catalog No:107594(SMN2 antibody) at dilution of 1:50 (under 40x lens)

IP Result of anti-SMN2 (IP:Catalog No:107594, 4ug; Detection:Catalog No:107594 1:500) with HEK-293 cells lysate 2440ug.

