

Serum amyloid P component antibody



Catalog Number: 107528

Product name

Serum amyloid P component antibody

Specificity

Human; other species not tested.

Antibody description

Serum amyloid P component Mouse Monoclonal antibody. Positive IHC detected in human kidney tissue, human liver tissue. Positive WB detected in Human kidney, human blood tissue. Observed molecular weight by Western-blot: 27kD

Preparation

This antibody was obtained by immunization of Serum amyloid P component recombinant protein (Accession Number: NM_001639). Purification method: Protein A purified.

Formulation

PBS with 0.02% sodium azide and 50% glycerol pH 7.3.

Storage

Store at -20°C. DO NOT ALIQUOT

Clonality

Monoclonal

Ig Type

Mouse IgG2b

Applications

ELISA, WB, IHC

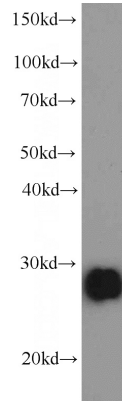
Dilutions

Recommended Dilution:

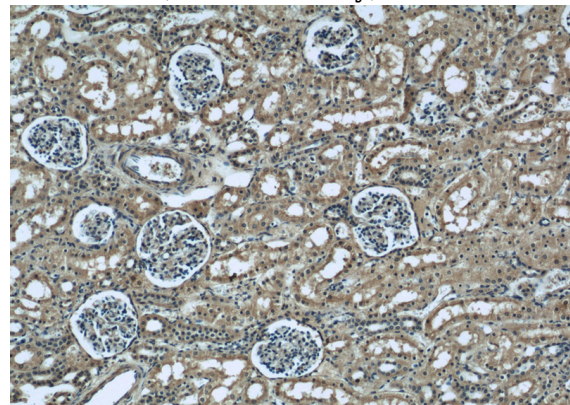
WB: 1:500-1:5000

IHC: 1:20-1:200

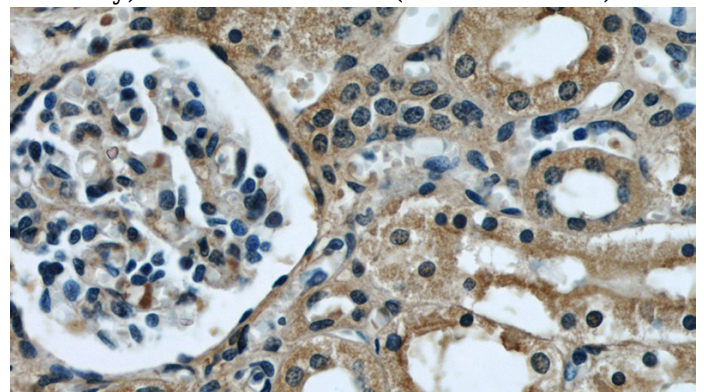
Validations



human kidney tissue were subjected to SDS PAGE followed by western blot with Catalog No:107528(APCS antibody) at dilution of 1:1000



Immunohistochemical of paraffin-embedded human kidney using Catalog No:107528(APCS antibody) at dilution of 1:50 (under 10x lens)



Immunohistochemical of paraffin-embedded human kidney using Catalog No:107528(APCS antibody) at dilution of 1:50 (under 40x lens)