

S100A6 antibody

Catalog Number: 107519

Product name

S100A6 antibody

Specificity

Human; other species not tested.

Antibody description

S100A6 Mouse Monoclonal antibody. Positive IHC detected in human liver cancer. Positive WB detected in HeLa cells, A549 cells. Observed molecular weight by Western-blot: 10 kDa

Preparation

This antibody was obtained by immunization of S100A6 recombinant protein (Accession Number: XM_017002033). Purification method: Protein G purified.

Formulation

PBS with 0.02% sodium azide and 50% glycerol pH 7.3.

Storage

Store at -20°C. DO NOT ALIQUOT

Clonality

Monoclonal

Ig Type

Mouse IgG1

Applications

ELISA, WB, IF, IHC

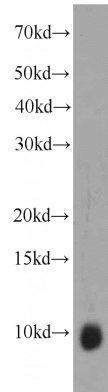
Dilutions

Recommended Dilution:

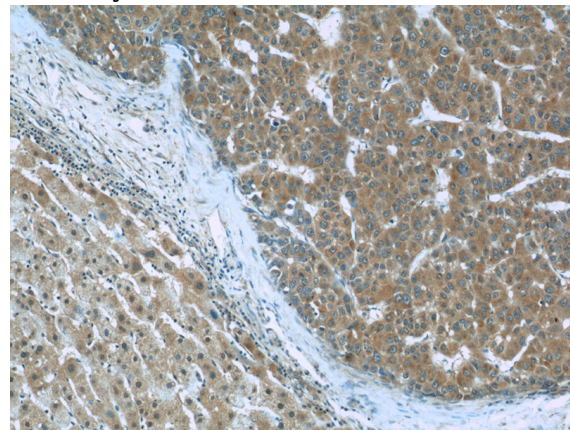
WB: 1:500-1:5000

IHC: 1:20-1:200

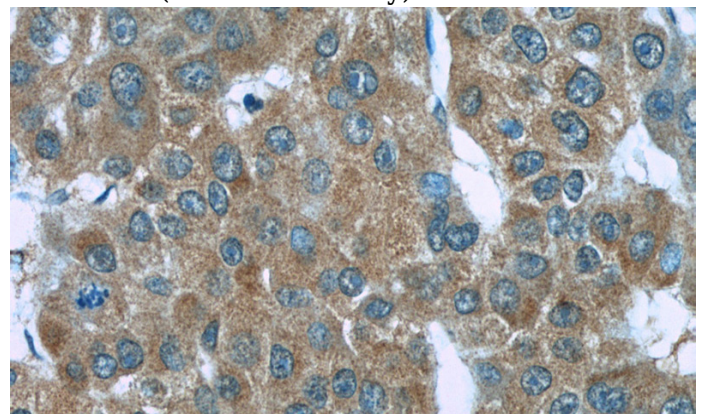
Validations



HeLa cells were subjected to SDS PAGE followed by western blot with Catalog No:107519(S100A6 antibody) at dilution of 1:1000



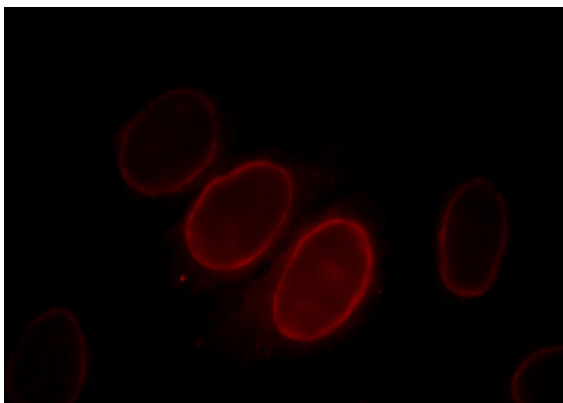
Immunohistochemistry of paraffin-embedded human liver cancer slide using Catalog No:107519(S100A6 Antibody) at dilution of 1:50



Immunohistochemistry of paraffin-embedded human liver cancer slide using Catalog No:107519(S100A6 Antibody) at dilution of 1:50

S100A6 antibody

Catalog Number: 107519



Immunofluorescent analysis of HepG2 cells, using S100A6 antibody Catalog No: at 1:25 dilution and Rhodamine-labeled goat anti-mouse IgG (red).