

MCL1 antibody



Catalog Number: 107418

Product name

MCL1 antibody

IHC: 1:20-1:200

IF: 1:10-1:100

Specificity

Human; other species not tested.

Antibody description

MCL1 Mouse Monoclonal antibody. Positive IHC detected in human breast cancer tissue. Positive IF detected in MCF-7 cells, Hela cells. Positive WB detected in Hela cells, A431 cells, Jurkat cells. Observed molecular weight by Western-blot: 40 kDa

Preparation

This antibody was obtained by immunization of MCL1 recombinant protein (Accession Number: NM_021960). Purification method: Protein A purified.

Formulation

PBS with 0.02% sodium azide and 50% glycerol pH 7.3.

Storage

Store at -20°C. DO NOT ALIQUOT

Clonality

Monoclonal

Ig Type

Mouse IgG2b

Applications

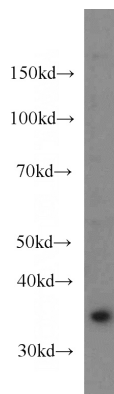
ELISA, WB, IF, IHC

Dilutions

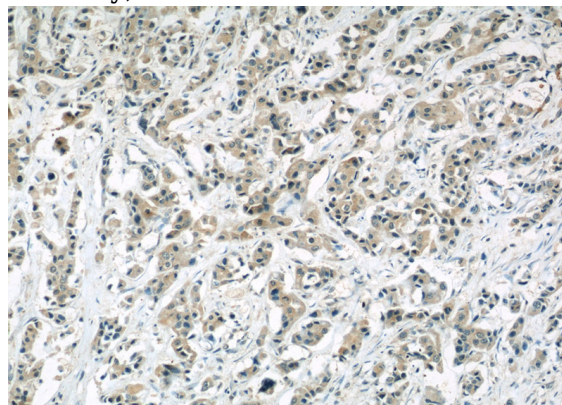
Recommended Dilution:

WB: 1:500-1:5000

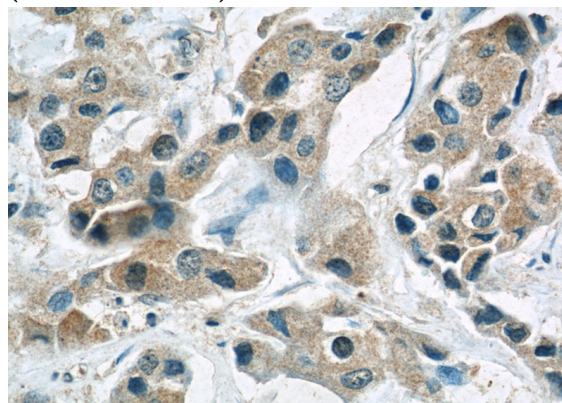
Validations



HeLa cells were subjected to SDS PAGE followed by western blot with Catalog No:107418(MCL1 antibody) at dilution of 1:1000



Immunohistochemical of paraffin-embedded human breast cancer using Catalog No:107418(MCL1 antibody) at dilution of 1:50 (under 10x lens)

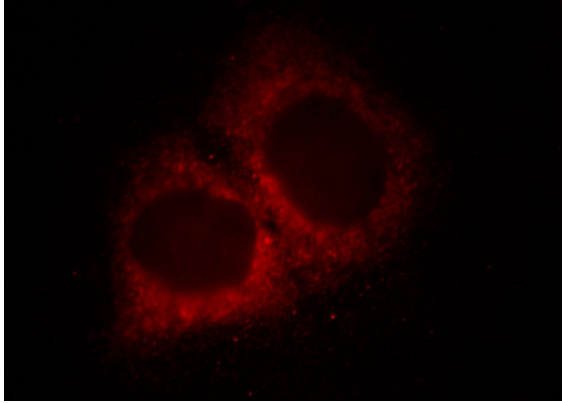


Immunohistochemical of paraffin-embedded

MCL1 antibody

Catalog Number: 107418

human breast cancer using Catalog
No:107418(MCL1 antibody) at dilution of 1:50
(under 40x lens)



Immunofluorescent analysis of MCF-7 cells, using
MCL1 antibody Catalog No: at 1:25 dilution and
Rhodamine-labeled goat anti-mouse IgG (red).