

KLK3,PSA antibody



Catalog Number: 107365

Product name

KLK3,PSA antibody

Specificity

Human; other species not tested.

Antibody description

KLK3,PSA Mouse Monoclonal antibody. Positive IHC detected in human prostate cancer tissue.

Preparation

This antibody was obtained by immunization of KLK3,PSA recombinant protein (Accession Number: NM_001648). Purification method: Protein G purified.

Formulation

PBS with 0.02% sodium azide and 50% glycerol pH 7.3.

Storage

Store at -20°C. DO NOT ALIQUOT

Clonality

Monoclonal

Ig Type

Mouse IgG1

Applications

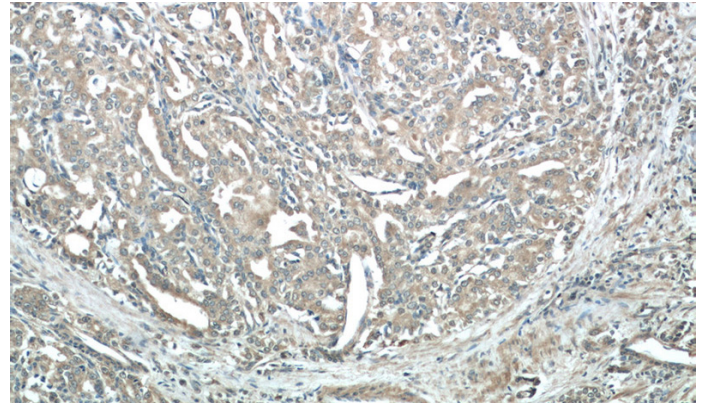
ELISA, IHC

Dilutions

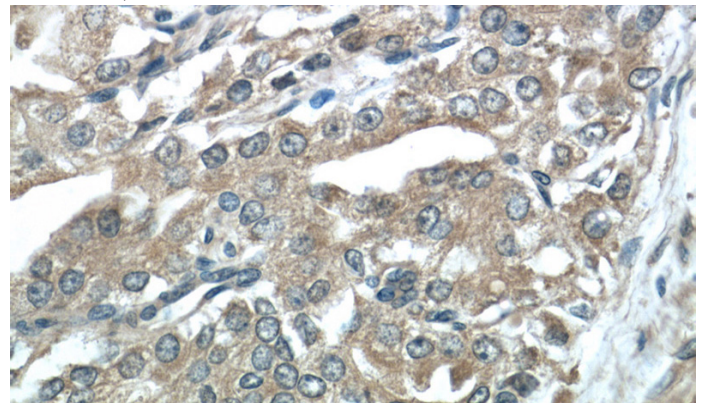
Recommended Dilution:

IHC: 1:20-1:200

Validations



Immunohistochemistry of paraffin-embedded human prostate cancer tissue slide using (KLK3,PSA Antibody) at dilution of 1:50 (under 10x lens)



Immunohistochemistry of paraffin-embedded human prostate cancer tissue slide using (KLK3,PSA Antibody) at dilution of 1:50 (under 40x lens)