

# NF-L antibody



Catalog Number: 107332

## Product name

NF-L antibody

## Immunogen

[Human NEFL Recombinant protein \(His tag\)](#)

## Specificity

Human, Mouse, Rat; other species not tested.

## Antibody description

NF-L Mouse Monoclonal antibody. Positive IHC detected in human brain tissue. Positive WB detected in Human stomach, human brain tissue. Observed molecular weight by Western-blot: 65 kDa

## Preparation

This antibody was obtained by immunization of NF-L recombinant protein (Accession Number: NM\_006158). Purification method: Protein G purified.

## Formulation

PBS with 0.02% sodium azide and 50% glycerol pH 7.3.

## Storage

Store at -20°C. DO NOT ALIQUOT

## Clonality

Monoclonal

## Ig Type

Mouse IgG1

## Applications

ELISA, WB, IHC

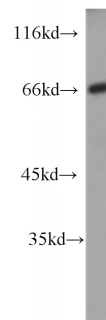
## Dilutions

Recommended Dilution:

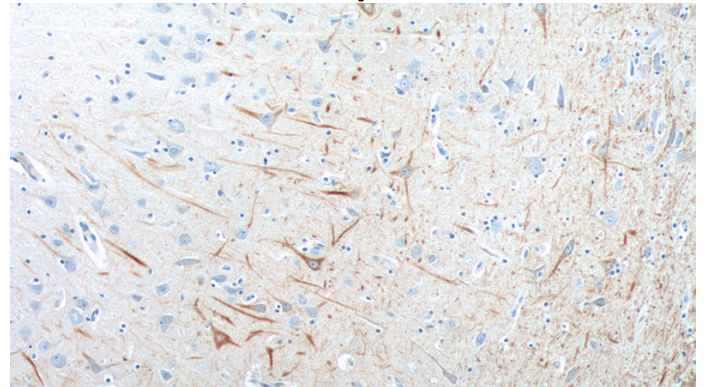
WB: 1:500-1:5000

IHC: 1:20-1:200

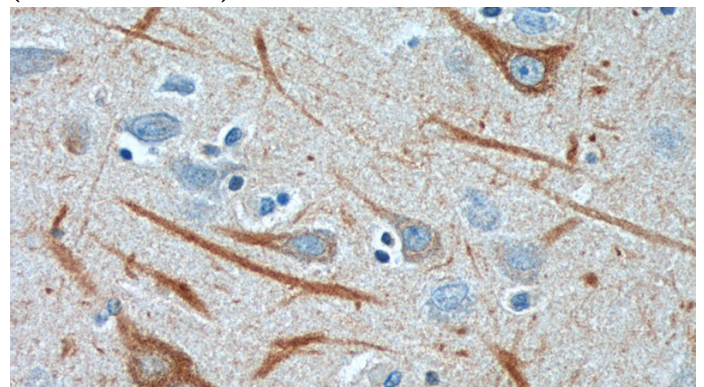
## Validations



human stomach tissue were subjected to SDS PAGE followed by western blot with Catalog No:107332(NEFL antibody) at dilution of 1:1000



Immunohistochemistry of paraffin-embedded human brain tissue slide using Catalog No:107332(NEFL Antibody) at dilution of 1:200 (under 10x lens).



# NF-L antibody



Catalog Number: 107332

---

Immunohistochemistry of paraffin-embedded human brain tissue slide using Catalog

No:107332(NEFL Antibody) at dilution of 1:200 (under 40x lens).