

# GM2A antibody



Catalog Number: 107302

## Product name

GM2A antibody

## Immunogen

[Human GM2A Recombinant protein \(His tag\)](#)

## Specificity

Human; other species not tested.

## Antibody description

GM2A Mouse Monoclonal antibody. Positive WB detected in Hela cells, human placenta tissue. Observed molecular weight by Western-blot: 22 kDa

## Preparation

This antibody was obtained by immunization of GM2A recombinant protein (Accession Number: NM\_000405). Purification method: Protein A purified.

## Formulation

PBS with 0.02% sodium azide and 50% glycerol pH 7.3.

## Storage

Store at -20°C. DO NOT ALIQUOT

## Clonality

Monoclonal

## Ig Type

Mouse IgG2a

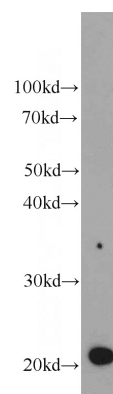
## Applications

ELISA, WB

## Dilutions

Recommended Dilution:  
WB: 1:200-1:2000

## Validations



HeLa cells were subjected to SDS PAGE followed by western blot with Catalog No:107302(GM2A antibody) at dilution of 1:500