

HER2/ErbB2 antibody

Catalog Number: 107260

Product name

HER2/ErbB2 antibody

Specificity

Human; other species not tested.

Antibody description

HER2/ErbB2 Mouse Monoclonal antibody. Positive IHC detected in human breast cancer tissue. Positive FC detected in HeLa cells.

Preparation

This antibody was obtained by immunization of HER2/ErbB2 recombinant protein (Accession Number: NM_004448). Purification method: Protein A purified.

Formulation

PBS with 0.02% sodium azide and 50% glycerol pH 7.3.

Storage

Store at -20°C. DO NOT ALIQUOT

Clonality

Monoclonal

Ig Type

Mouse IgG2b

Applications

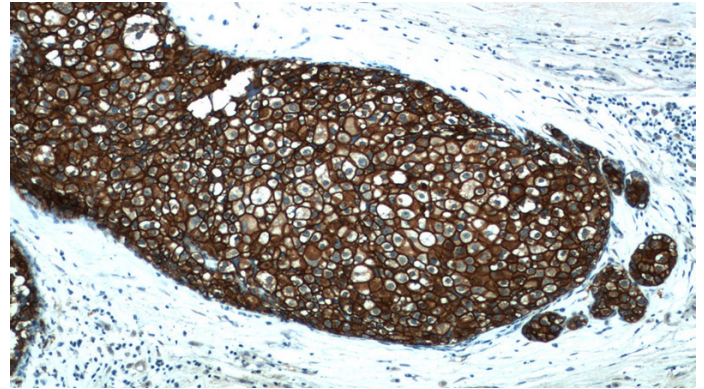
ELISA, IHC, FC

Dilutions

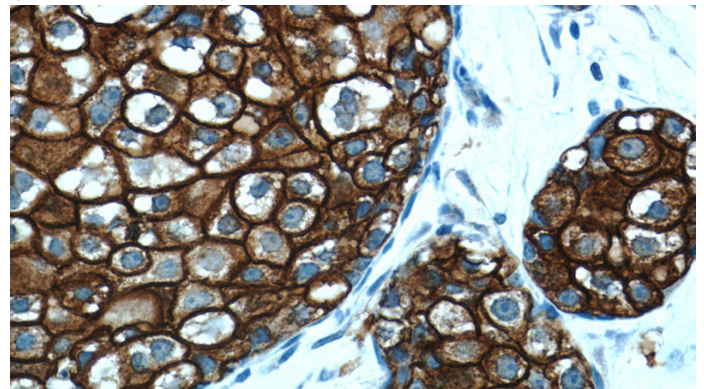
Recommended Dilution:

IHC: 1:50-1:400

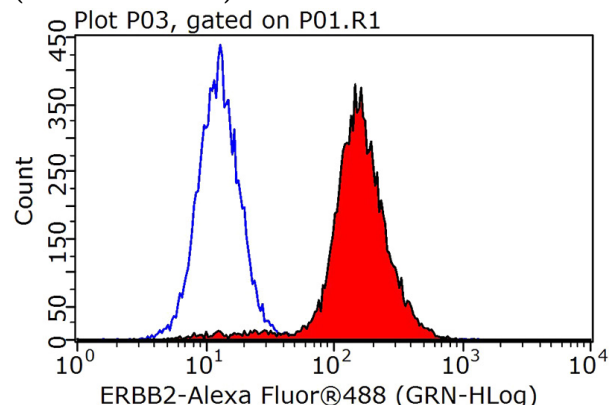
Validations



Immunohistochemistry of paraffin-embedded human breast cancer tissue slide using Catalog No:107260(ERBB2 Antibody) at dilution of 1:200 (under 10x lens)



Immunohistochemistry of paraffin-embedded human breast cancer tissue slide using Catalog No:107260(ERBB2 Antibody) at dilution of 1:200 (under 40x lens)



1X10⁶ HeLa cells were stained with 0.2ug ERBB2 antibody (Catalog No:107260, red) and control antibody (blue). Fixed with 90% MeOH blocked with 3% BSA (30 min). Alexa Fluor 488-conjugated AffiniPure Goat Anti-Mouse IgG(H+L) with dilution 1:1000.