

# EPCAM antibody



Catalog Number: 107254

## Product name

EPCAM antibody

IHC: 1:50-1:500

IF: 1:50-1:500

## Specificity

Human; other species not tested.

## Antibody description

EPCAM Mouse Monoclonal antibody. Positive IF detected in MCF-7 cells. Positive IHC detected in human breast cancer tissue. Positive WB detected in COLO 320 cells. Observed molecular weight by Western-blot: 35-40 kDa

## Preparation

This antibody was obtained by immunization of EPCAM recombinant protein (Accession Number: NM\_002354). Purification method: Protein A purified.

## Formulation

PBS with 0.02% sodium azide and 50% glycerol pH 7.3.

## Storage

Store at -20°C. DO NOT ALIQUOT

## Clonality

Monoclonal

## Ig Type

Mouse IgG2a

## Applications

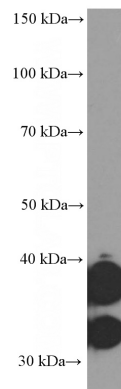
ELISA, IHC, WB, IF

## Dilutions

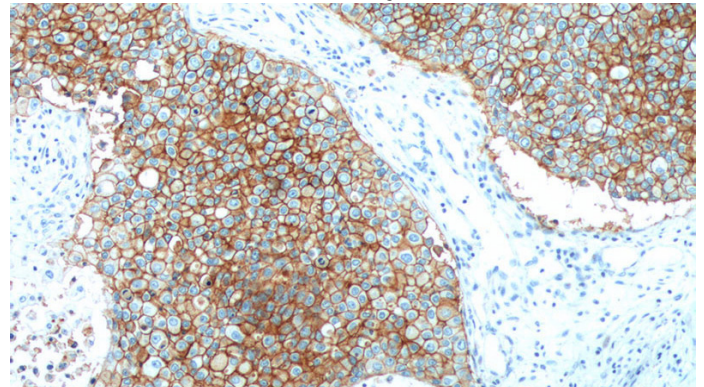
Recommended Dilution:

WB: 1:1000-1:10000

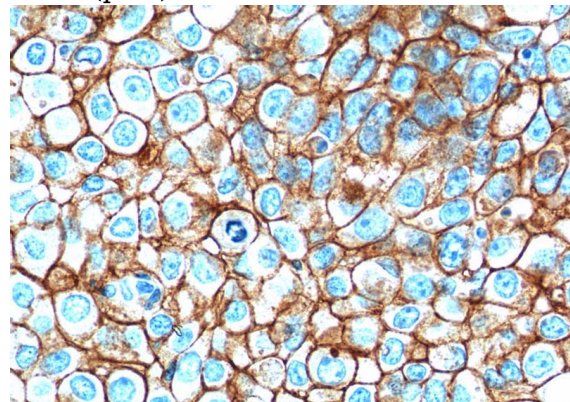
## Validations



COLO 320 cells were subjected to SDS PAGE followed by western blot with Catalog No:107254(EPCAM Antibody) at dilution of 1:2000



Immunohistochemistry of paraffin-embedded human breast cancer tissue slide using (EPCAM Antibody) at dilution of 1:500 (under 10x lens). Heat mediated antigen retrieved with Tris-EDTA buffer(pH9).

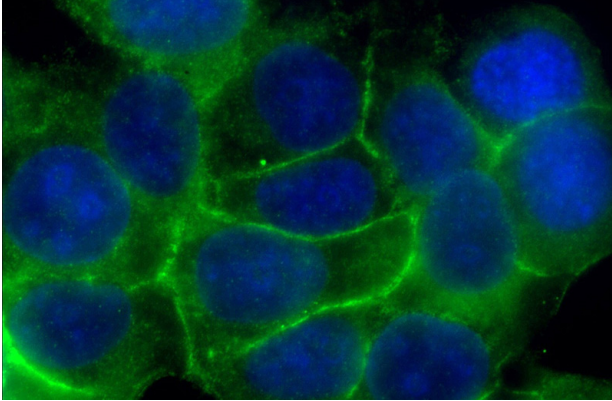


# EPCAM antibody

Catalog Number: 107254

---

Immunohistochemistry of paraffin-embedded human breast cancer tissue slide using (EPCAM Antibody) at dilution of 1:500 (under 40x lens). Heat mediated antigen retrieved with Tris-EDTA buffer(pH9).



Immunofluorescent analysis of (-20oc Ethanol) fixed MCF-7 cells using Catalog No:107254(EPCAM Antibody) at dilution of 1:100 and Alexa Fluor 488-conjugated AffiniPure Goat Anti-Mouse IgG(H+L)