

# ECM1 antibody

Catalog Number: 107246

## Product name

ECM1 antibody

## Specificity

human; other species not tested.

## Antibody description

ECM1 Mouse Monoclonal antibody. Positive WB detected in MCF7 cells. Positive IHC detected in human breast cancer. Observed molecular weight by Western-blot: 61kD

## Preparation

This antibody was obtained by immunization of ECM1 recombinant protein (Accession Number: NM\_004425). Purification method: Protein A purified.

## Formulation

PBS with 0.02% sodium azide and 50% glycerol pH 7.3.

## Storage

Store at -20°C. DO NOT ALIQUOT

## Clonality

Monoclonal

## Ig Type

Mouse IgG2a

## Applications

ELISA, WB, IHC

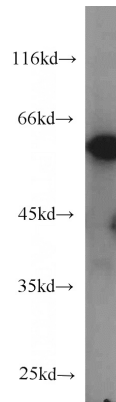
## Dilutions

Recommended Dilution:

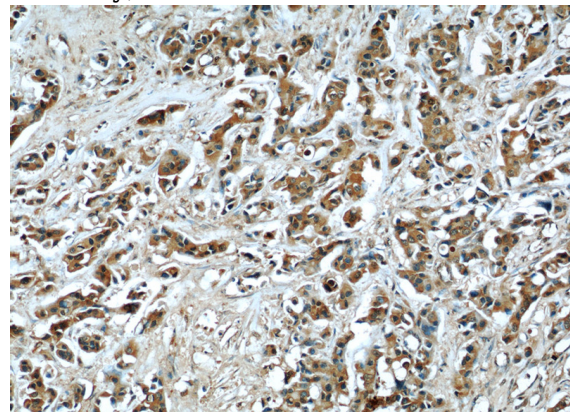
WB: 1:200-1:2000

IHC: 1:20-1:200

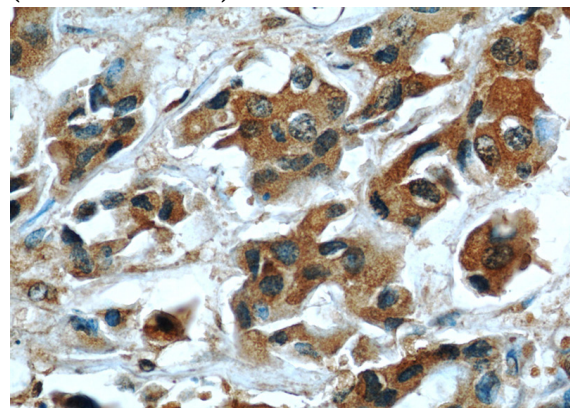
## Validations



MCF7 cells were subjected to SDS PAGE followed by western blot with Catalog No:107246(ECM1 antibody) at dilution of 1:500



Immunohistochemical of paraffin-embedded human breast cancer using Catalog No:107246(ECM1 antibody) at dilution of 1:50 (under 10x lens)



Immunohistochemical of paraffin-embedded human breast cancer using Catalog No:107246(ECM1 antibody) at dilution of 1:50 (under 40x lens)