

Clusterin antibody



Catalog Number: 107165

Product name

Clusterin antibody

Recommended Dilution:

WB: 1:500-1:5000

Immunogen

IHC: 1:20-1:200

[Human CLU Recombinant protein \(His tag\)](#)

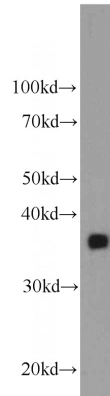
Validations

Specificity

Human; other species not tested.

Antibody description

Clusterin Mouse Monoclonal antibody. Positive WB detected in Human Blood. Positive IHC detected in human liver tissue, human breast cancer tissue, human prostate cancer tissue. Observed molecular weight by Western-blot: 36kDa



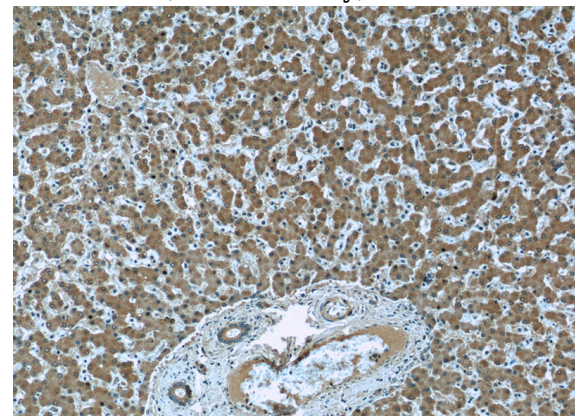
Preparation

This antibody was obtained by immunization of Clusterin recombinant protein (Accession Number: NM_001831). Purification method: Protein G purified.

human blood tissue were subjected to SDS PAGE followed by western blot with Catalog No:107165(CLU antibody) at dilution of 1:1000

Formulation

PBS with 0.02% sodium azide and 50% glycerol pH 7.3.



Storage

Store at -20°C. DO NOT ALIQUOT

Clonality

Monoclonal

Ig Type

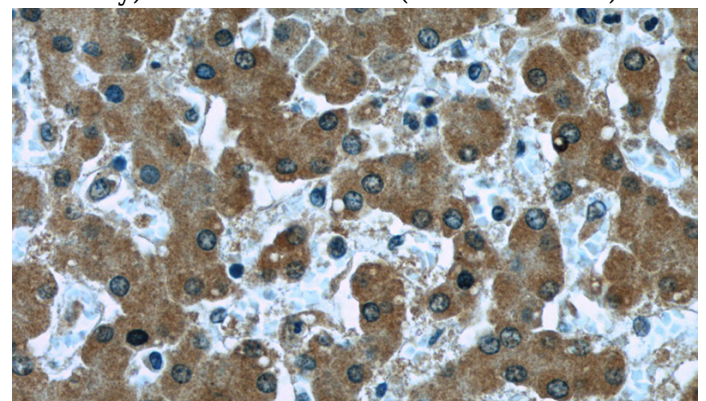
Mouse IgG1

Applications

ELISA, WB, IHC

Dilutions

Immunohistochemistry of paraffin-embedded human liver slide using Catalog No:107165(CLU Antibody) at dilution of 1:50 (under 10x lens)



Clusterin antibody



Catalog Number: 107165

Immunohistochemistry of paraffin-embedded

human liver slide using Catalog No:107165(CLU Antibody) at dilution of 1:50 (under 40x lens)