

# CLPP antibody



Catalog Number: 107162

---

## Product name

CLPP antibody

## Specificity

Human; other species not tested.

## Antibody description

CLPP Mouse Monoclonal antibody. Positive WB detected in human heart tissue, pig heart tissue. Observed molecular weight by Western-blot: 30 kDa

## Preparation

This antibody was obtained by immunization of CLPP recombinant protein (Accession Number: NM\_006012). Purification method: Protein A purified.

## Formulation

PBS with 0.02% sodium azide and 50% glycerol pH 7.3.

## Storage

Store at -20°C. DO NOT ALIQUOT

## Clonality

Monoclonal

## Ig Type

Mouse IgG3

## Applications

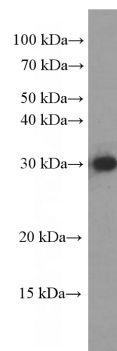
ELISA, WB

## Dilutions

Recommended Dilution:

WB: 1:500-1:5000

## Validations



human heart tissue were subjected to SDS PAGE followed by western blot with Catalog No:107162(CLPP Antibody) at dilution of 1:1000