

beta Actin antibody



Catalog Number: 107086

Product name

beta Actin antibody

Specificity

Human, Mouse, Rat, Hamster, Zebrafish; other species not tested.

Antibody description

beta Actin Mouse Monoclonal antibody. Positive IP detected in HeLa cells. Positive WB detected in multi-cells, A549 cells, CHO cells, HeLa. Positive FC detected in HeLa cells. Positive IF detected in HepG2 cells. Positive IHC detected in human kidney tissue, human brain tissue, human colon cancer tissue, human heart tissue. Observed molecular weight by Western-blot: 42 kDa

Preparation

This antibody was obtained by immunization of recombinant protein (Accession Number: NM_001101). Purification method: Protein A purified.

Formulation

PBS with 0.02% sodium azide and 50% glycerol pH 7.3.

Storage

Store at -20°C. DO NOT ALIQUOT

Clonality

Monoclonal

Ig Type

Mouse IgG2b

Applications

ELISA, IHC, IF, WB, FC, IP

Dilutions

Recommended Dilution:

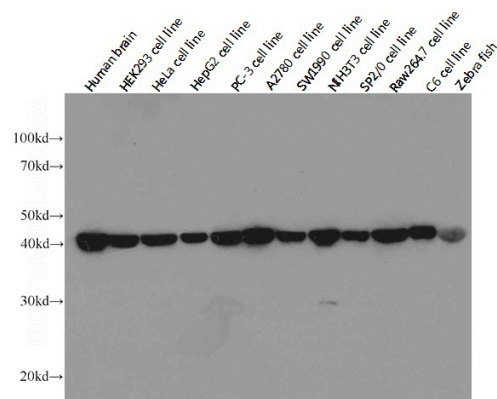
WB: 1:5000-1:50000

IP: 1:5000-1:50000

IHC: 1:20-1:200

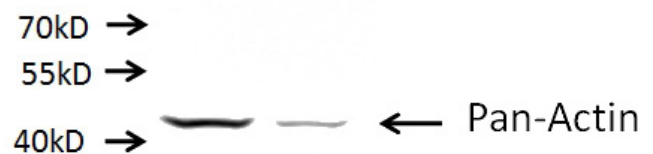
IF: 1:20-1:200

Validations



Western blot analysis of beta-actin in various tissues and cell lines using Proteintech antibody Catalog No:117302 at a dilution of 1:20000. (Exposure time: 10 seconds)

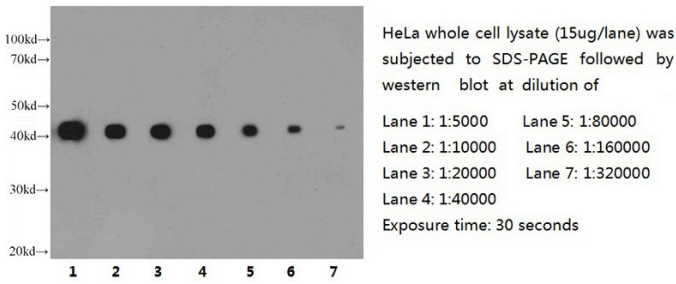
shcon shACTB



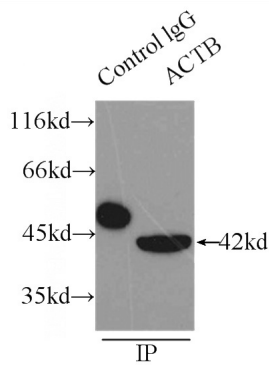
A549 cells (shcontrol and shRNA of Beta Actin) were subjected to SDS PAGE followed by western blot with Catalog No:117302 (Mouse anti Pan-actin antibody) at dilution of 1:10000.

beta Actin antibody

Catalog Number: 107086

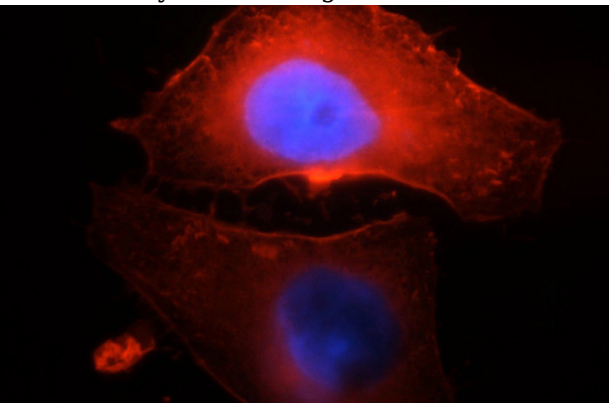


WB result of anti-beta Actin monoclonal antibody (Catalog No:117302) with HeLa lysate at various

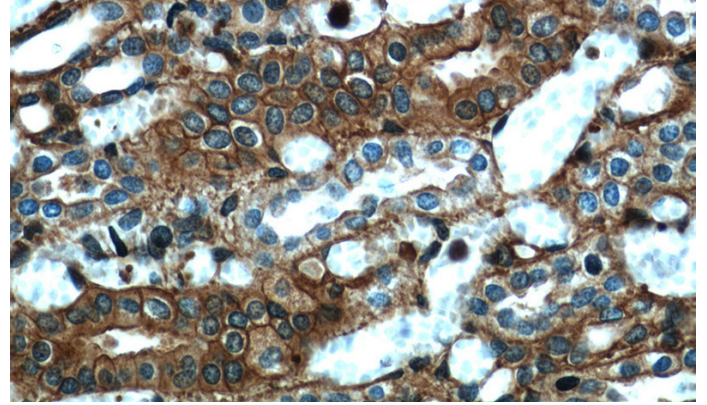


dilutions.

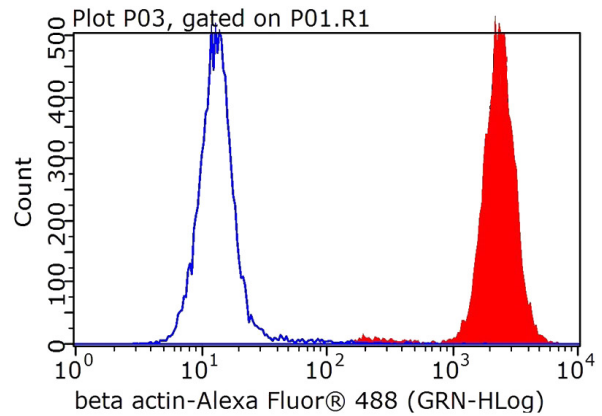
IP Result of anti-beta actin (IP:Catalog No:117302, 3ug; Detection:Catalog No:117302 1:10000) with HeLa cells lysate 3100ug.



Immunofluorescent analysis of HepG2 cells, using beta actin antibody Catalog No: at 1:200 dilution and Rhodamine-labeled goat anti-mouse IgG (red). Blue pseudocolor = DAPI (fluorescent DNA dye).



Immunohistochemical of paraffin-embedded human kidney using Catalog No:117302 at dilution of 1:500 (under 40x lens)



1X10⁶ HeLa cells were stained with 0.2ug beta actin antibody (Catalog No:117302, red) and control antibody (blue). Fixed with 4% PFA blocked with 3% BSA (30 min). FITC-Goat anti-Mouse IgG with dilution 1:100.