

B23 antibody

Catalog Number: 107075

Product name

B23 antibody

IHC: 1:20-1:200

IF: 1:10-1:100

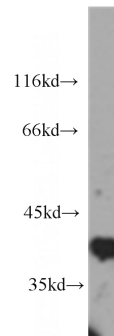
Specificity

Human; other species not tested.

Validations

Antibody description

B23 Mouse Monoclonal antibody. Positive WB detected in Hepg2 cells. Positive IF detected in MCF-7 cells. Positive IHC detected in human breast cancer tissue, human colon cancer tissue. Observed molecular weight by Western-blot: 33kd



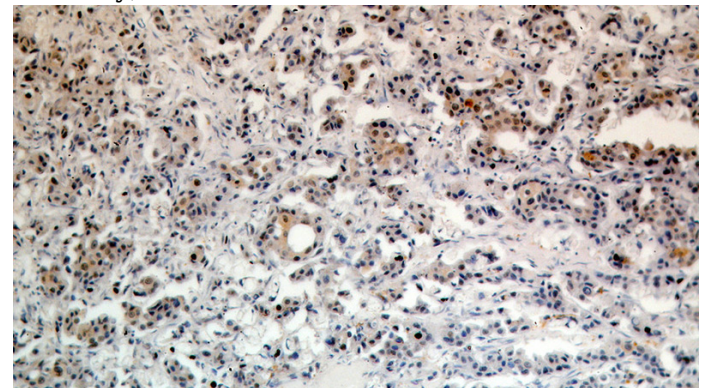
Preparation

This antibody was obtained by immunization of B23 recombinant protein (Accession Number: NM_001355006). Purification method: Caprylic Acid/Ammonium Sulfate Precipitation.

HepG2 cells were subjected to SDS PAGE followed by western blot with Catalog No:107075(B23 antibody) at dilution of 1:1000

Formulation

PBS with 0.1% sodium azide and 50% glycerol pH 7.3.



Storage

Store at -20°C. DO NOT ALIQUOT

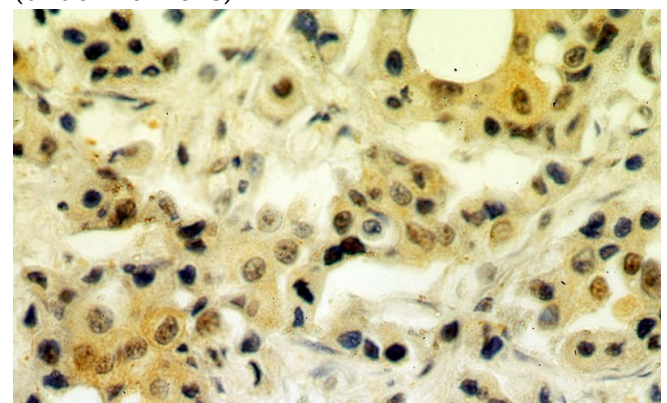
Clonality

Monoclonal

Immunohistochemical of paraffin-embedded human breast cancer using Catalog No:107075(B23 antibody) at dilution of 1:100 (under 10x lens)

Ig Type

Mouse IgG1



Applications

ELISA, WB, IHC, IF

Dilutions

Recommended Dilution:

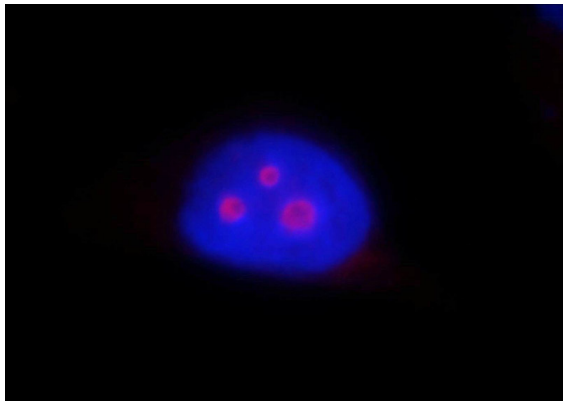
WB: 1:500-1:5000

Immunohistochemical of paraffin-embedded

B23 antibody

Catalog Number: 107075

human breast cancer using Catalog
No:107075(B23 antibody) at dilution of 1:100
(under 40x lens)



Immunofluorescent analysis of MCF-7 cells, using
B23 antibody Catalog No: at 1:25 dilution and
Rhodamine-labeled goat anti-mouse IgG (red).
Blue pseudocolor = DAPI (fluorescent DNA dye).