

# Cytokeratin 6A-specific antibody



Catalog Number: 107010

## Product name

Cytokeratin 6A-specific antibody

## Specificity

Human, Mouse; other species not tested.

## Antibody description

Cytokeratin 6A-specific Rabbit Polyclonal antibody. Positive WB detected in A431 cells, HeLa cells, mouse skin tissue. Positive IP detected in HeLa cells. Observed molecular weight by Western-blot: 56 kDa

## Preparation

This antibody was obtained by immunization of Peptide (Accession Number: NM\_005554). Purification method: Antigen affinity purified.

## Formulation

PBS with 0.02% sodium azide and 50% glycerol pH 7.3.

## Storage

Store at -20°C. DO NOT ALIQUOT

## Clonality

Polyclonal

## Ig Type

Rabbit IgG

## Applications

ELISA, WB, IP

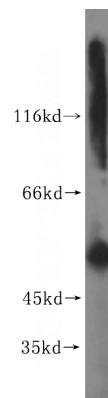
## Dilutions

Recommended Dilution:

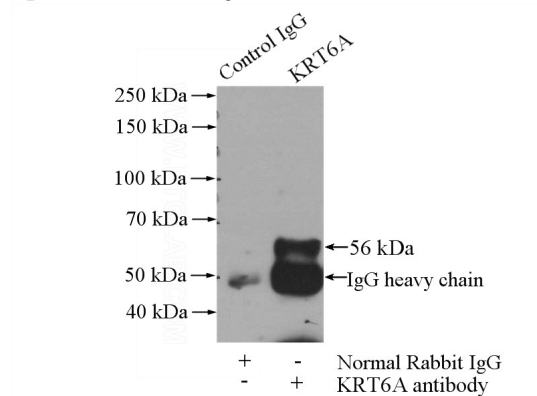
WB: 1:200-1:2000

IP: 1:200-1:1000

## Validations



A431 cells were subjected to SDS PAGE followed by western blot with Catalog No:109808(KRT6-specific antibody) at dilution of 1:300



IP Result of anti-KRT6-specific (IP:Catalog No:109808, 4ug; Detection:Catalog No:109808 1:300) with HeLa cells lysate 520ug.