

# PKM2-specific antibody



Catalog Number: 106995

## Product name

PKM2-specific antibody

## Specificity

Human, Mouse; other species not tested.

## Antibody description

PKM2-specific Rabbit Polyclonal antibody. Positive WB detected in MCF7 cells, 293 cell, C6 cells, HEK-293 cells, HeLa cells, HepG2 cells, K-562 cells, mouse brain tissue, mouse muscle/liver tissue, mouse skeletal muscle tissue, Recombinant protein. Positive IP detected in MCF-7 cells. Positive IHC detected in human lung cancer tissue, human colon cancer tissue. Positive IF detected in MCF-7 cells. Observed molecular weight by Western-blot: 58 kDa

## Preparation

This antibody was obtained by immunization of Peptide (Accession Number: NM\_002654). Purification method: Antigen affinity purified.

## Formulation

PBS with 0.02% sodium azide and 50% glycerol pH 7.3.

## Storage

Store at -20°C. DO NOT ALIQUOT

## Clonality

Polyclonal

## Ig Type

Rabbit IgG

## Applications

ELISA, WB, IHC, IF, IP

## Dilutions

Recommended Dilution:

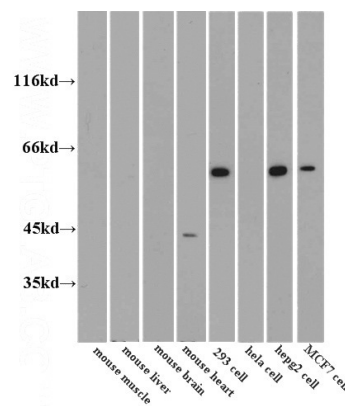
WB: 1:500-1:5000

IP: 1:200-1:1000

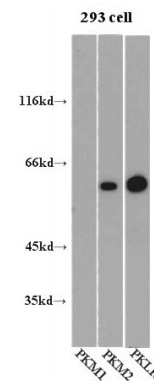
IHC: 1:20-1:200

IF: 1:10-1:100

## Validations



WB results of Catalog No:113861(PKM2 antibody)

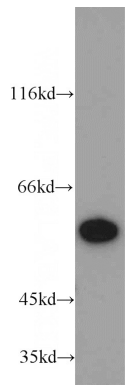


at dilution of 1:1500.

WB results of PKM1,PKM2,PKLR on 293 cell. (anti-PKM1 antibody is used as a negative

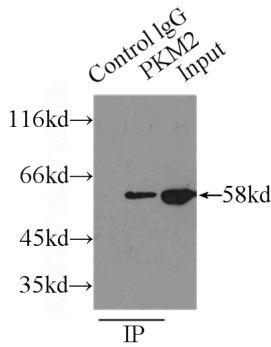
# PKM2-specific antibody

Catalog Number: 106995

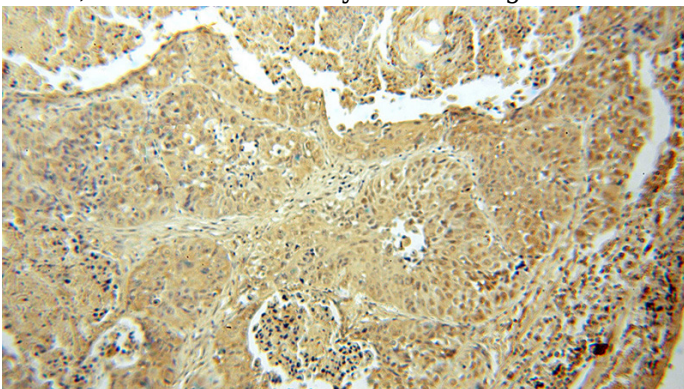


control.)

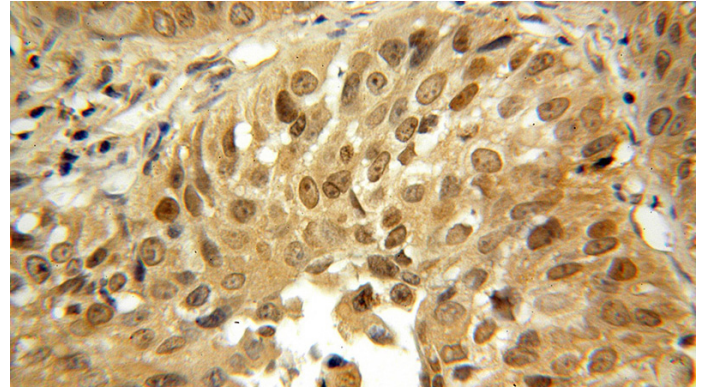
MCF7 cells were subjected to SDS PAGE followed by western blot with Catalog No:113861(PK-M2-specific antibody) at dilution of 1:1500



IP Result of anti-PK-M2-specific (IP:Catalog No:113861, 4ug; Detection:Catalog No:113861 1:300) with MCF-7 cells lysate 3250ug.

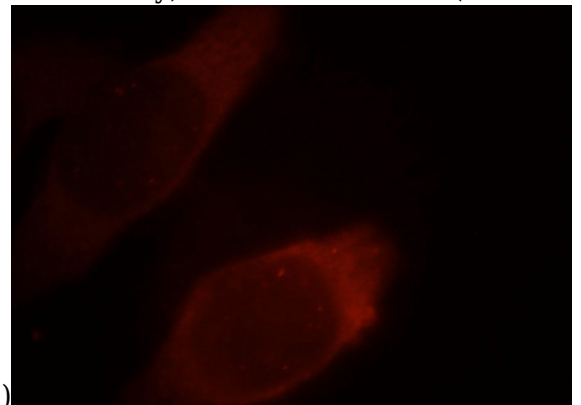


Immunohistochemical of paraffin-embedded human lung cancer using Catalog No:113861(PK-M2-specific antibody) at dilution of 1:100 (under 10x lens)



Immunohistochemical of paraffin-embedded human lung cancer using Catalog No:113861(PK-M2-specific antibody) at dilution of 1:100 (under

40x lens)



Immunofluorescent analysis of MCF-7 cells, using PKM2 antibody Catalog No: at 1:25 dilution and Rhodamine-labeled goat anti-rabbit IgG (red).