

# MEF2C antibody



Catalog Number: 106990

## Product name

MEF2C antibody

## Specificity

Human, Mouse, Rat; other species not tested.

## Antibody description

MEF2C Rabbit Polyclonal antibody. Positive WB detected in mouse cerebellum tissue, mouse brain tissue, mouse heart tissue, rat brain tissue. Positive IHC detected in human brain tissue, human heart tissue, human kidney tissue, human lung tissue, human ovary tissue, human placenta tissue, human skin tissue, human spleen tissue, human testis tissue. Observed molecular weight by Western-blot: 51 kDa

## Preparation

This antibody was obtained by immunization of Peptide (Accession Number: NM\_002397). Purification method: Antigen affinity purified.

## Formulation

PBS with 0.02% sodium azide and 50% glycerol pH 7.3.

## Storage

Store at -20°C. DO NOT ALIQUOT

## Clonality

Polyclonal

## Ig Type

Rabbit IgG

## Applications

ELISA, WB, IHC

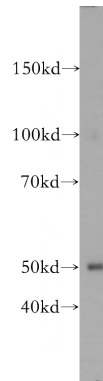
## Dilutions

Recommended Dilution:

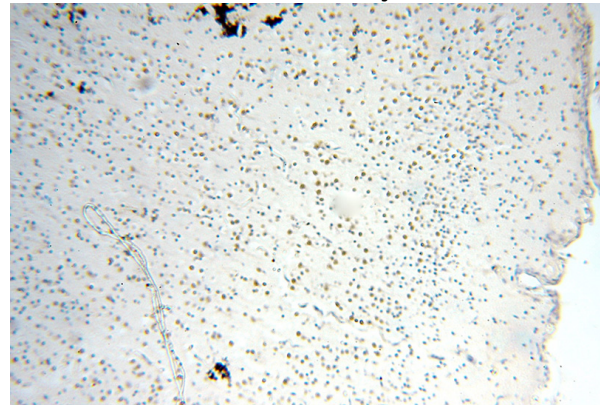
WB: 1:200-1:2000

IHC: 1:20-1:200

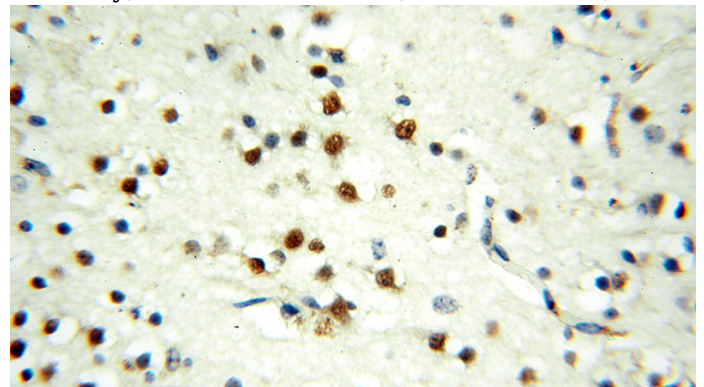
## Validations



mouse cerebellum tissue were subjected to SDS PAGE followed by western blot with Catalog No:112636(MEF2C antibody) at dilution of 1:300



Immunohistochemical of paraffin-embedded human brain using Catalog No:112636(MEF2C antibody) at dilution of 1:50 (under 10x lens)



# MEF2C antibody



Catalog Number: 106990

---

Immunohistochemical of paraffin-embedded

human brain using Catalog No:112636(MEF2C antibody) at dilution of 1:50 (under 40x lens)