

# Lin28A-specific antibody



Catalog Number: 106987

## Product name

Lin28A-specific antibody

## Specificity

Human, Mouse, Rat; other species not tested.

## Antibody description

Lin28A-specific Rabbit Polyclonal antibody. Positive WB detected in human heart tissue, hESC cells, human brain tissue, mouse liver tissue, NCCIT cell. Positive IHC detected in human small intestine tissue, human brain tissue, human heart tissue, human kidney tissue, human lung tissue, human ovary tissue, human spleen tissue, human testis tissue. Observed molecular weight by Western-blot: 28 kDa

## Preparation

This antibody was obtained by immunization of Peptide (Accession Number: NM\_024674). Purification method: Antigen affinity purified.

## Formulation

PBS with 0.02% sodium azide and 50% glycerol pH 7.3.

## Storage

Store at -20°C. DO NOT ALIQUOT

## Clonality

Polyclonal

## Ig Type

Rabbit IgG

## Applications

ELISA, WB, IHC

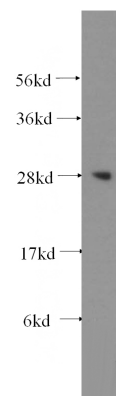
## Dilutions

Recommended Dilution:

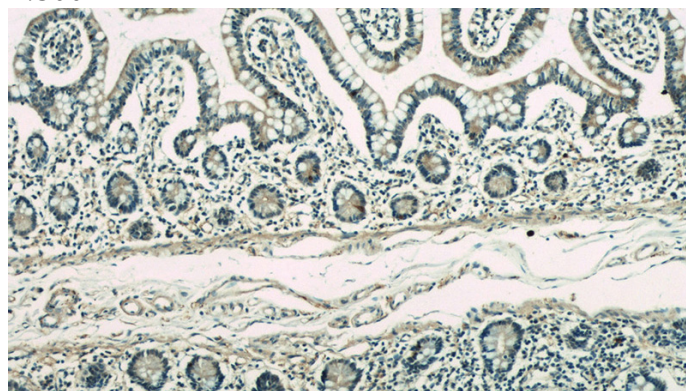
WB: 1:500-1:5000

IHC: 1:20-1:200

## Validations



human heart tissue were subjected to SDS PAGE followed by western blot with Catalog No:112232(Lin28A-specific antibody) at dilution of 1:300

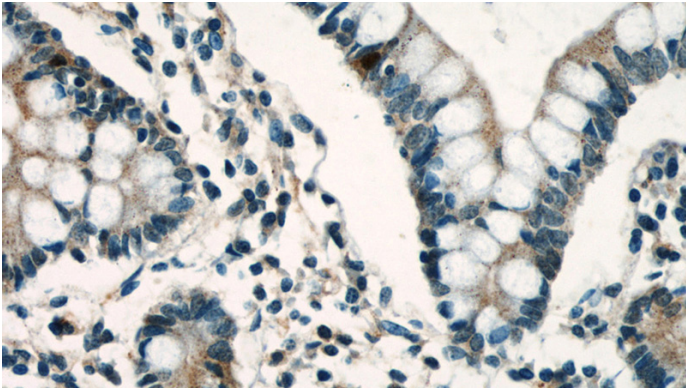


Immunohistochemical of paraffin-embedded human small intestine using Catalog No:112232(Lin28A-specific antibody) at dilution of 1:50 (under 10x lens)

# Lin28A-specific antibody

Catalog Number: 106987

---



Immunohistochemical of paraffin-embedded human small intestine using Catalog No:112232(Lin28A-specific antibody) at dilution of 1:50 (under 40x lens)