

# RAB27A-specific antibody

Catalog Number: 106965

## Product name

RAB27A-specific antibody

## Specificity

human, rat; other species not tested.

## Antibody description

RAB27A-specific Rabbit Polyclonal antibody.  
Positive WB detected in K-562 cells, HL-60 cells.  
Positive IHC detected in human liver cancer.  
Observed molecular weight by Western-blot: 25kd

## Preparation

This antibody was obtained by immunization of Peptide (Accession Number: NM\_004580).  
Purification method: Antigen affinity purified.

## Formulation

PBS with 0.02% sodium azide and 50% glycerol  
pH 7.3.

## Storage

Store at -20°C. DO NOT ALIQUOT

## Clonality

Polyclonal

## Ig Type

Rabbit IgG

## Applications

ELISA, WB, IHC

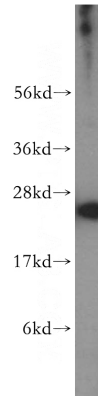
## Dilutions

Recommended Dilution:

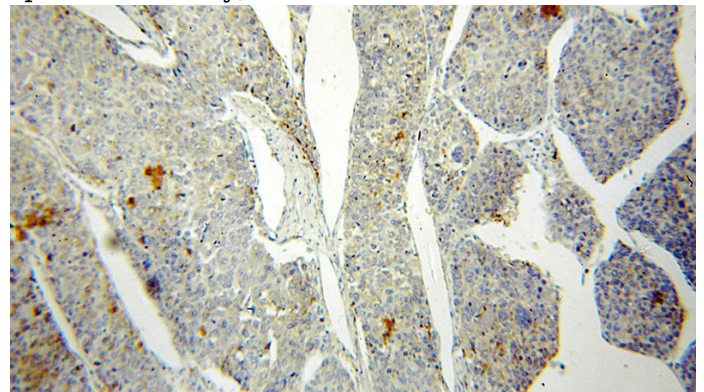
WB: 1:200-1:2000

IHC: 1:20-1:200

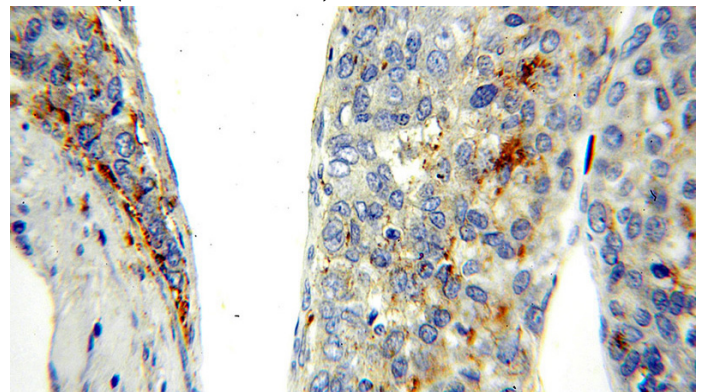
## Validations



K-562 cells were subjected to SDS PAGE followed by western blot with Catalog No:114426(RAB27A-specific antibody) at dilution of 1:300



Immunohistochemical of paraffin-embedded human liver cancer using Catalog No:114426(RAB27A-specific antibody) at dilution of 1:50 (under 10x lens)



Immunohistochemical of paraffin-embedded human liver cancer using Catalog No:114426(RAB27A-specific antibody) at dilution of 1:50 (under 40x lens)