

Anti-ACTA2 antibody

Catalog Number: 106751

Product name

Anti-ACTA2 antibody

Specificity

human ACTA2

Antibody description

Rabbit polyclonal to ACTA2

Preparation

Produced in rabbits immunized with A synthetic peptide corresponding to the N-terminus of the human Alpha-Smooth Muscle Actin (ACTA2), and purified by antigen affinity chromatography.

Formulation

0.2 µm filtered solution in PBS

Storage

This antibody can be stored at 2°C-8°C for one month without detectable loss of activity. Antibody products are stable for twelve months from date of receipt when stored at -20°C to -80°C.

Preservative-Free.

Sodium azide is recommended to avoid contamination (final concentration 0.05%-0.1%). It is toxic to cells and should be disposed of properly. Avoid repeated freeze-thaw cycles.

Clonality

Polyclonal

Ig Type

Rabbit IgG

Applications

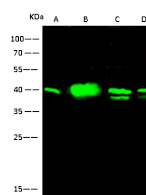
WB, IHC-P

Dilutions

WB: 1-10 µg/ml

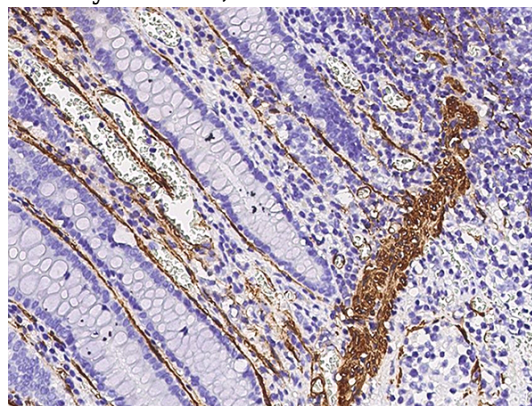
IHC-P: 0.05-1 µg/mL

Validations



Lanes Items	A	B	C	D
Sample (whole cell lysate)	HepG2	HeLa	Jurkat	HEK293
Sample Volume (µg/lane)	30	30	30	30
Gel	13% SDS-PAGE reducing gel			
Recommended Concentration	5-10µg/ml			
Secondary Antibody	Dylight 800 labeled Antibody to rabbit IgG (H+L), at 1:5000 dilution			
Developed using Odyssey imaging system.				
Explanation	Predicted band size : 42 kDa Observed band size : 42 kDa			

Actin (ACTA2) Antibody, Rabbit PAb, Antigen Affinity Purified, Western blot



Actin (ACTA2) Antibody, Rabbit PAb, Antigen Affinity Purified, Immunohistochemistry

Immunochemical staining of human Actin in human small intestine with rabbit polyclonal antibody (0.05 µg/mL, formalin-fixed paraffin embedded sections).