

Anti-c-Met/HGFR antibody



Catalog Number: 106749

Product name

Anti-c-Met/HGFR antibody

Specificity

Human c-Met / HGFR

Antibody description

Rabbit polyclonal to c-Met/HGFR

Preparation

Produced in rabbits immunized with a synthetic peptide corresponding to the center region of the Human c-Met / HGFR, and purified by antigen affinity chromatography.

Formulation

0.2 µm filtered solution in PBS

Storage

This antibody can be stored at 2°C-8°C for one month without detectable loss of activity. Antibody products are stable for twelve months from date of receipt when stored at -20°C to -80°C.

Preservative-Free.

Sodium azide is recommended to avoid contamination (final concentration 0.05%-0.1%). It is toxic to cells and should be disposed of

properly. Avoid repeated freeze-thaw cycles.

Clonality

Polyclonal

Ig Type

Rabbit IgG

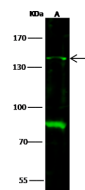
Applications

WB

Dilutions

WB10-20 µg/ml

Validations



Lanes	A
Items	
Sample (whole cell lysate)	Jurkat
Sample Volume (µg/lane)	30
Gel	7.5% SDS-PAGE reducing gel
Recommended concentration	10-20 µg/ml
Secondary Antibody	Dylight 800 labeled Antibody to Rabbit IgG (H+L), at 1:5000 dilution.
	Developed using Odyssey imaging system.
Explanation	Predicted band size : 155 kDa Observed band size : 140 kDa Additional bands at : 85 kDa (We are unsure as to the identity of these extra bands.)

c-Met / HGFR Antibody, Rabbit PAb, Antigen Affinity Purified, Western blot