

# Anti-PREX1 antibody



Catalog Number: 106734

## Product name

Anti-PREX1 antibody

## Specificity

Human PREX1

## Antibody description

Rabbit polyclonal to PREX1

## Preparation

Produced in rabbits immunized with a synthetic peptide corresponding to the center region of the human PREX1, and purified by antigen affinity chromatography.

## Formulation

0.2 µm filtered solution in PBS

## Storage

This antibody can be stored at 2°C-8°C for one month without detectable loss of activity. Antibody products are stable for twelve months from date of receipt when stored at -20°C to -80°C.

Preservative-Free.

Sodium azide is recommended to avoid contamination (final concentration 0.05%-0.1%). It is toxic to cells and should be disposed of properly. Avoid repeated freeze-thaw cycles.

## Clonality

Polyclonal

## Ig Type

Rabbit IgG

## Applications

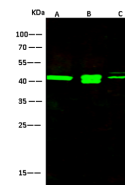
WB

## Dilutions

WB: 5-10 µg/ml

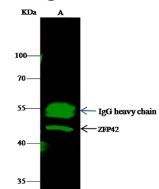
IP: 1-4 µg/mg of lysate

## Validations



Items	Lanes	A	B	C
Sample (whole cell lysate)		Jurkat	293T	Raji
Sample Volume (µg/lane)		30	30	30
Gel		13% SDS-PAGE reducing gel		
Recommended Concentration		5-10 µg/ml		
Secondary Antibody		Dylight 800-labeled Antibody To Rabbit IgG (H+L), at 1:5000 dilution.		
Antibody		Developed using Odyssey imaging system.		
Explanation		Predicted band size : 35 kDa Observed band size : 42 kDa Additional bands at : 45 kDa and 40 kDa (We are unsure as to the identity of these extra bands.)		

## PREX1 Antibody, Rabbit PAb, Antigen Affinity



Items	Lanes	A
Sample (whole cell lysate)		Raw264.7
Sample quantity		0.5 mg
IP antibody quantity		2 µg
Protein G agarose		15 µl of 50% Protein G Agarose
Gel		13% SDS-PAGE reducing gel
Primary antibody		KLH-SMCC-sinoA1174 antibody at 10 µg/ml
Secondary antibody		Dylight 800-labeled antibody to rabbit IgG (H+L), at 1:5000 dilution.

Purified, Western blot

## PREX1 Antibody, Rabbit PAb, Antigen Affinity

Purified, Immunoprecipitation