

Anti-ERN1/IRE1 antibody



Catalog Number: 106675

Product name

Anti-ERN1/IRE1 antibody

Immunogen

[Human ERN1/IRE1 \(aa 465-977, His & GST Tag\) recombinant protein](#)

Specificity

Human ERN1 / IRE1

Antibody description

Rabbit polyclonal to ERN1/IRE1

Preparation

Produced in rabbits immunized with purified, recombinant Human ERN1 / IRE1 (rh ERN1 / IRE1; O75460-1; Pro465-Leu977). ERN1 / IRE1 specific IgG was purified by Human ERN1 / IRE1 affinity chromatography.

Formulation

0.2 µm filtered solution in PBS

Storage

This antibody can be stored at 2°C-8°C for one month without detectable loss of activity. Antibody products are stable for twelve months from date of receipt when stored at -20°C to -80°C.

Preservative-Free.

Sodium azide is recommended to avoid contamination (final concentration 0.05%-0.1%). It is toxic to cells and should be disposed of

properly. Avoid repeated freeze-thaw cycles.

Clonality

Polyclonal

Ig Type

Rabbit IgG

Applications

ELISA, WB

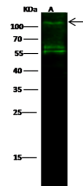
Dilutions

WB: 5-20 µg/ml

ELISA: 0.1-0.2 µg/ml

This antibody can be used at 0.1-0.2 µg/ml with the appropriate secondary reagents to detect Human ERN1 / IRE1.

Validations



Lanes	A
Items	
Sample (whole cell lysate)	Raji
Sample Volume (µg/lane)	30
Gel	13% SDS-PAGE reducing gel
Recommended Concentration	10 µg/ml
Secondary Antibody	Dylight 800-labeled Antibody to Rabbit IgG (H+L), at 1:5000 dilution.
Explanation	Developed using Odyssey imaging system. Predicted band size : 110 kDa Observed band size : 110 kDa Additional bands at : 60 kDa and 55 kDa (We are unsure as to the identity of these extra bands.)

ERN1 / IRE1 Antibody, Rabbit PAb, Antigen Affinity Purified, Western blot