

Anti-BCRP/ABCG2 antibody



Catalog Number: 106672

Product name

Anti-BCRP/ABCG2 antibody

Specificity

Human ABCG2

Antibody description

Rabbit polyclonal to BCRP/ABCG2

Preparation

Produced in rabbits immunized with a synthetic peptide corresponding to the center region of the Human ABCG2, and purified by antigen affinity chromatography.

Formulation

0.2 µm filtered solution in PBS

Storage

This antibody can be stored at 2°C-8°C for one month without detectable loss of activity. Antibody products are stable for twelve months from date of receipt when stored at -20°C to -80°C.

Preservative-Free.

Sodium azide is recommended to avoid contamination (final concentration 0.05%-0.1%). It is toxic to cells and should be disposed of properly. Avoid repeated freeze-thaw cycles.

Clonality

Polyclonal

Ig Type

Rabbit IgG

Applications

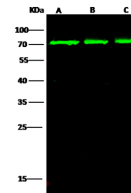
WB, IP

Dilutions

WB: 5-10 µg/ml

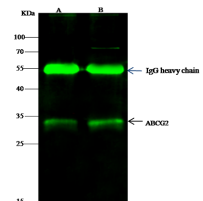
IP: 1-4 µg/mg of lysate

Validations



Lanes	A	B	C
Items			
Sample (whole cell lysate)	HepG2	Jurkat	cos-7
Sample Volume (µg/lane)	30	30	30
Gel	13% SDS-PAGE reducing gel		
Recommended Concentration	5-10 µg/ml		
Secondary Antibody	Dylight 800 labeled Antibody to Rabbit IgG (H+L), at 1:5000 dilution.		
	Developed using Odyssey imaging system.		
Explanation	Predicted band size : 72 kDa Observed band size : 70 kDa		

ABCG2 Antibody, Rabbit PAb, Antigen Affinity



Lanes	A	B
Items		
Sample (whole cell lysate)	HepG2	Jurkat
Sample quantity	0.5 mg	
IP antibody quantity	2 µg	
Immunomagnetic beads/Pulldown	60 µg	
Gel	13% SDS-PAGE reducing gel	
Primary antibody	KJ11-SMCC-SIN0A341 antibody at 10 µg/ml	
Secondary antibody	Dylight 800 labeled antibody to rabbit IgG (H+L), at 1:5000 dilution	

Purified, Western blot

ABCG2 Antibody, Rabbit PAb, Antigen Affinity

Purified, Immunoprecipitation