

# Anti-SPARCL1 / SPARC-like 1 antibody



Catalog Number: 106653

## Product name

Anti-SPARCL1 / SPARC-like 1 antibody

## Specificity

Human SPARCL1

## Antibody description

Rabbit monoclonal to SPARCL1 / SPARC-like 1

## Preparation

This antibody was obtained from a rabbit immunized with purified, recombinant Human SPARCL1 (rh SPARCL1; NP\_004675.3; Met 1-Phe 664) and conjugated with FITC under optimum conditions, the unreacted FITC was removed.

## Formulation

Aqueous solution containing 0.5% BSA and 0.09% sodium azide

## Storage

This antibody is stable for 12 months from date of receipt when stored at 2°C-8°C. Protected from prolonged exposure to light. Do not freeze ! Sodium azide is toxic to cells and should be disposed of properly. Flush with large volumes of water during disposal.

## Clonality

Monoclonal

## Ig Type

Rabbit IgG

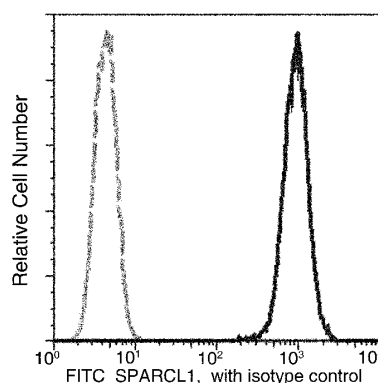
## Applications

FCM

## Dilutions

FCM

## Validations



SPARCL1 Antibody (FITC), Rabbit MAb, Flow cytometric

Profile of anti-SPARCL1 reactivity on HL60 cells analyzed by flow cytometry.