

Anti-SLAMF8 antibody



Catalog Number: 106619

Product name

Anti-SLAMF8 antibody

Immunogen

[Mouse SLAMF8 \(His Tag\) recombinant protein](#)

Specificity

Mouse SLAMF8

Antibody description

Rabbit monoclonal to SLAMF8

Preparation

This antibody was obtained from a rabbit immunized with purified, recombinant Mouse SLAMF8 (rM SLAMF8; NP_083360.2; Met1-Asp231).

Formulation

0.2 µm filtered solution in PBS

Storage

This antibody can be stored at 2°C-8°C for one month without detectable loss of activity. Antibody products are stable for twelve months from date of receipt when stored at -20°C to -80°C.

Preservative-Free.

Sodium azide is recommended to avoid

contamination (final concentration 0.05%-0.1%). It is toxic to cells and should be disposed of properly. Avoid repeated freeze-thaw cycles.

Clonality

Monoclonal

Ig Type

Rabbit IgG

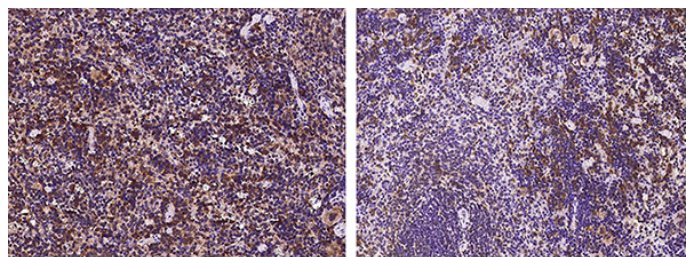
Applications

IHC-P

Dilutions

IHC-P: 1-10 µg/mL

Validations



SLAMF8 Antibody, Rabbit MAb,
Immunohistochemistry

Immunochemical staining of mouse SLAMF8 in mouse spleen (from 2 donors) with rabbit monoclonal antibody (5 µg/mL, formalin-fixed paraffin embedded sections).