

Anti-SPARCL1 / SPARC-like 1 antibody



Catalog Number: 106571

Product name

Monoclonal

Anti-SPARCL1 / SPARC-like 1 antibody

Ig Type

Specificity

Mouse IgG1

Human SPARCL1

No cross-reactivity in ELISA with Mouse SDC1

Applications

FCM

Antibody description

Dilutions

Mouse monoclonal to SPARCL1 / SPARC-like 1

FCM

Preparation

Validations

This antibody was produced from a hybridoma resulting from the fusion of a mouse myeloma with B cells obtained from a mouse immunized with purified, recombinant Human SPARCL1 (rh SPARCL1; NP_004675.3; Met 1-Phe 664) and conjugated with FITC under optimum conditions, the unreacted FITC was removed.

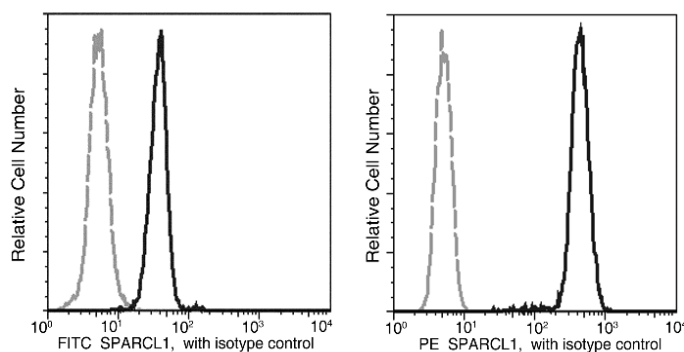
Formulation

Aqueous solution containing 0.5% BSA and 0.09% sodium azide

Storage

This antibody is stable for 12 months from date of receipt when stored at 2°C-8°C. Protected from prolonged exposure to light. Do not freeze ! Sodium azide is toxic to cells and should be disposed of properly. Flush with large volumes of water during disposal.

Clonality



SPARCL1 Antibody (FITC), Mouse MAb, Flow cytometric

Profile of anti-SPARCL1 reactivity on HL60 cells analyzed by flow cytometry. The cells were treated according to manufacturer's manual (BD Pharmingen™ Cat. No. 554714), and stained with FITC conjugated Mouse anti-SPARCL1. The fluorescence histograms were derived from gated events with the forward and side light-scatter characteristics of intact cells.