

Anti-EDEM2 / C20orf31 antibody



Catalog Number: 106524

Product name

Anti-EDEM2 / C20orf31 antibody

Immunogen

[Human EDEM2 / C20orf31 \(His Tag\) recombinant protein](#)

Specificity

Human EDEM2 / C20orf31

Antibody description

Rabbit polyclonal to EDEM2 / C20orf31

Preparation

Produced in rabbits immunized with purified, recombinant Human EDEM2 / C20orf31 (rh EDEM2 / C20orf31; AAH01371.1; Met1-Lys492). EDEM2 / C20orf31 specific IgG was purified by Human EDEM2 / C20orf31 affinity chromatography.

Formulation

0.2 µm filtered solution in PBS

Storage

This antibody can be stored at 2°C-8°C for one month without detectable loss of activity. Antibody products are stable for twelve months from date of receipt when stored at -20°C to -80°C.

Preservative-Free.

Sodium azide is recommended to avoid contamination (final concentration 0.05%-0.1%). It is toxic to cells and should be disposed of properly. Avoid repeated freeze-thaw cycles.

Clonality

Polyclonal

Ig Type

Rabbit IgG

Applications

ELISA, WB, IHC-P, IP

Dilutions

WB: 10-20 µg/ml

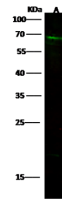
ELISA: 0.1-0.2 µg/ml

This antibody can be used at 0.1-0.2 µg/ml with the appropriate secondary reagents to detect Human EDEM2 / C20orf31.

IHC-P: 0.1-2 µg/mL

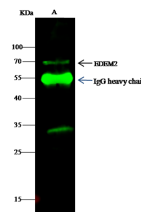
IP: 1-4 µg/mg of lysate

Validations



Lanes	A
Items	
Sample (whole cell lysate)	HepG2
Sample Volume (µg/lane)	30
Gel	13% SDS-PAGE reducing gel
Recommended Concentration	10-20 µg/ml
Secondary Antibody	Dylight 800-labeled Antibody To Rabbit IgG (H+L), at 1:5000 dilution.
Developed using Odyssey imaging system.	
Explanation	Predicted band size : 65 kDa Observed band size : 65 kDa

EDEM2 / C20orf31 Antibody, Rabbit PAb, Antigen Affinity Purified, Western blot



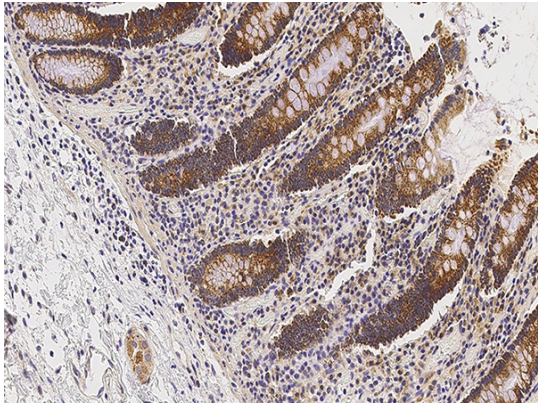
Lanes	A
Items	
Sample (whole cell lysate)	HepG2
Sample quantity	0.5 mg
IP antibody quantity	4 µg
Immunomagnetic beads Protein G	60 ng
Gel	13% SDS-PAGE reducing gel
Primary antibody	EDEM2-His antibody at 10 µg/ml
Secondary antibody	Dylight 800-labeled antibody to rabbit IgG (H+L), at 1:5000 dilution

EDEM2 / C20orf31 Antibody, Rabbit PAb, Antigen Affinity Purified, Immunoprecipitation

Anti-EDEM2 / C20orf31 antibody



Catalog Number: 106524



EDEM2 / C20orf31 Antibody, Rabbit PAb, Antigen Affinity Purified

Immunochemical staining of human EDEM2 in human small intestine with rabbit polyclonal antibody (0.5 $\mu\text{g}/\text{mL}$, formalin-fixed paraffin embedded sections).