

Anti-EBOV-NP / Nucleoprotein antibody



Catalog Number: 106520

Product name

Anti-EBOV-NP / Nucleoprotein antibody

Immunogen

[EBOV EBOV-NP / Nucleoprotein \(His Tag\)](#)

Specificity

Ebola virus EBOV (subtype Zaire, strain H.sapiens-wt/GIN/2014/Kissidougou-C15)
Nucleoprotein / NP

Antibody description

Rabbit polyclonal to EBOV-NP / Nucleoprotein

Preparation

Produced in rabbits immunized with purified, recombinant Ebola virus EBOV (subtype Zaire, strain H.sapiens-wt/GIN/2014/Kissidougou-C15) Nucleoprotein / NP (AHX24646.1; His630-Gln739). Ebola virus EBOV (subtype Zaire, strain H.sapiens-wt/GIN/2014/Kissidougou-C15) Nucleoprotein / NP specific IgG was purified by Ebola virus EBOV (subtype Zaire, strain H.sapiens-wt/GIN/2014/Kissidougou-C15) Nucleoprotein / NP affinity chromatography.

Formulation

0.2 µm filtered solution in PBS

Storage

This antibody can be stored at 2°C-8°C for one month without detectable loss of activity. Antibody products are stable for twelve months from date of receipt when stored at -20°C to -80°C.

Preservative-Free.

Sodium azide is recommended to avoid contamination (final concentration 0.05%-0.1%). It

is toxic to cells and should be disposed of properly. Avoid repeated freeze-thaw cycles.

Clonality

Polyclonal

Ig Type

Rabbit IgG

Applications

ELISA, WB, IHC-P, IP

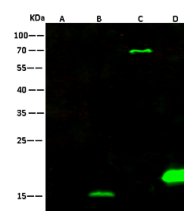
Dilutions

WB: 0.5-1 µg/ml

ELISA: 0.1-0.2 µg/ml

This antibody can be used at 0.1-0.2 µg/ml with the appropriate secondary reagents to detect Ebola virus EBOV (subtype Zaire, strain H.sapiens-wt/GIN/2014/Kissidougou-C15) Nucleoprotein / NP.

Validations



Lanes	A	B	C	D
Sample (Recombinant protein)	CLIC1 (Cat#15242-H07E)	Ebola virus (Cat#40444-V07E1)	Ebola virus (Cat#40444-V07E)	Ebola virus (Cat#40443-V07E1)
Sample Volume (ng/lane)	10	10	10	10
Gel	13% SDS-PAGE reducing gel			
Recommended Concentration	0.5-1 µg/ml			
Secondary Antibody	Dylight 800-labeled Antibody to Rabbit IgG (H+), at 1:5000 dilution. Developed using Odyssey imaging system.			

Ebola virus EBOV (subtype Zaire, strain H.sapiens-wt/GIN/2014/Kissidougou-C15) Nucleoprotein / NP Antibody, Rabbit PAb, Antigen Affinity Purified, Western blot