

# Anti-IRF6/IRF-6 antibody



Catalog Number: 106489

## Product name

Anti-IRF6/IRF-6 antibody

## Specificity

Human IRF6

## Antibody description

Mouse monoclonal to IRF6/IRF-6

## Preparation

This antibody was produced from a hybridoma resulting from the fusion of a mouse myeloma with B cells obtained from a mouse immunized with a synthetic peptide corresponding to the C-terminus of the human IRF6. The IgG fraction of the cell culture supernatant was purified by Protein A affinity chromatography.

## Formulation

0.2 µm filtered solution in PBS

## Storage

This antibody can be stored at 2°C-8°C for one month without detectable loss of activity. Antibody products are stable for twelve months from date of receipt when stored at -20°C to -80°C.

Preservative-Free.

Sodium azide is recommended to avoid contamination (final concentration 0.05%-0.1%). It is toxic to cells and should be disposed of properly. Avoid repeated freeze-thaw cycles.

## Clonality

Monoclonal

## Ig Type

Mouse IgG3

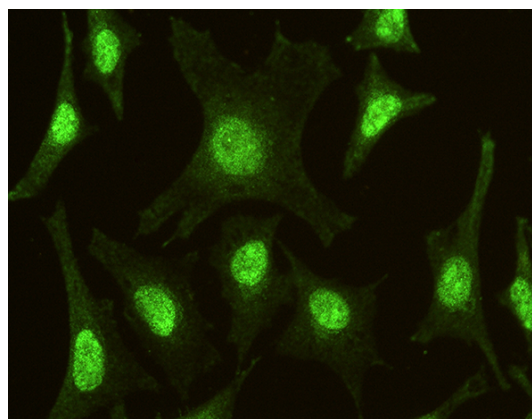
## Applications

IF, ICC/IF

## Dilutions

ICC/IF: 10-25 µg/mL

## Validations



IRF6 Antibody, Mouse MAb, Immunofluorescence

Immunofluorescence staining of Human IRF6 in HeLa cells. Cells were fixed with 4% PFA, permeabilized with 0.3% Triton X-100 in PBS, blocked with 10% serum, and incubated with mouse anti-Human IRF6 monoclonal antibody (15 µg/ml) at 4°C overnight. Then cells were stained with the Alexa Fluor® 488-conjugated Goat Anti-mouse IgG secondary antibody (green). Positive staining was localized to cytoplasm and nucleus.