

Anti-NAALADL1 antibody



Catalog Number: 106469

Product name

Anti-NAALADL1 antibody

Immunogen

[Mouse NAALADL1 \(His Tag\) recombinant protein](#)

Specificity

Mouse NAALADL1

Has cross-reactivity in ELISA with Human NAALADL1

Antibody description

Rabbit monoclonal to NAALADL1

Preparation

This antibody was obtained from a rabbit immunized with purified, recombinant Mouse NAALADL1 (rM NAALADL1; Q7M758; Pro29-Leu745).

Formulation

0.2 µm filtered solution in PBS

Storage

This antibody can be stored at 2°C-8°C for one month without detectable loss of activity. Antibody products are stable for twelve months from date of receipt when stored at -20°C to -80°C. Preservative-Free.

Sodium azide is recommended to avoid contamination (final concentration 0.05%-0.1%). It is toxic to cells and should be disposed of properly. Avoid repeated freeze-thaw cycles.

Clonality

Monoclonal

Ig Type

Rabbit IgG

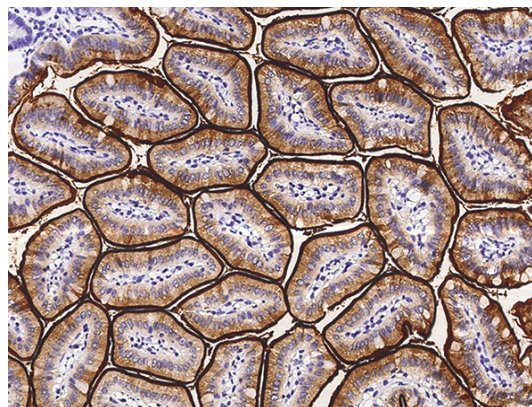
Applications

IHC-P

Dilutions

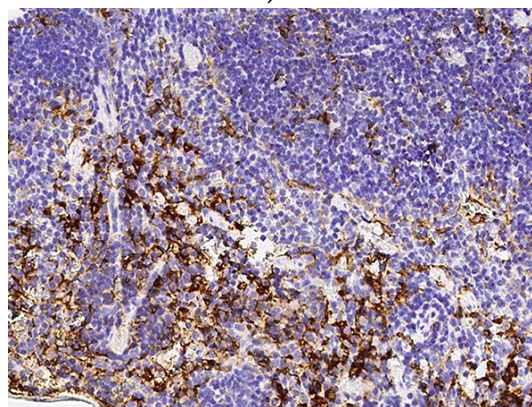
IHC-P: 1-10 µg/mL

Validations



NAALADL1 Antibody, Rabbit MAb, Immunohistochemistry

Immunochemical staining of mouse NAALADL1 in mouse small intestine with rabbit monoclonal antibody (5 µg/mL, formalin-fixed paraffin embedded sections).



NAALADL1 Antibody, Rabbit MAb, Immunohistochemistry

Immunochemical staining of mouse NAALADL1 in mouse spleen with rabbit monoclonal antibody (5 µg/mL, formalin-fixed paraffin embedded sections).