

Anti-CBX1 antibody



Catalog Number: 106465

Product name

Anti-CBX1 antibody

Specificity

Human CBX1

Antibody description

Rabbit polyclonal to CBX1

Preparation

Produced in rabbits immunized with a synthetic peptide corresponding to the center region of the Human CBX1, and purified by antigen affinity chromatography.

Formulation

0.2 µm filtered solution in PBS

Storage

This antibody can be stored at 2°C-8°C for one month without detectable loss of activity. Antibody products are stable for twelve months from date of receipt when stored at -20°C to -80°C.

Preservative-Free.

Sodium azide is recommended to avoid contamination (final concentration 0.05%-0.1%). It is toxic to cells and should be disposed of properly. Avoid repeated freeze-thaw cycles.

Clonality

Polyclonal

Ig Type

Rabbit IgG

Applications

WB, IF, IP, ICC/IF

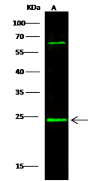
Dilutions

WB: 5-10 µg/ml

ICC/IF: 0.5-1.5 µg/mL

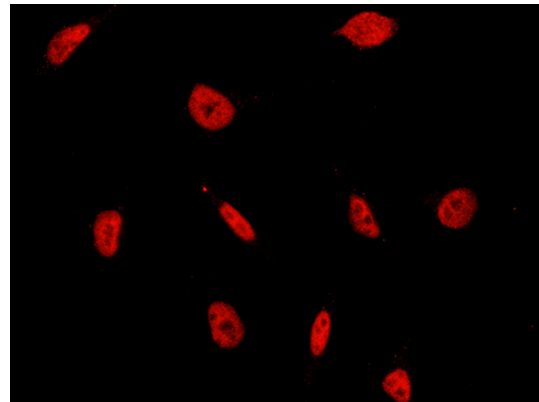
IP: 0.5-2 uL/mg of lysate

Validations



Items	Lanes	A
Sample (whole cell lysate)		MCF7
Sample Volume (µg/lane)		30
Gel		13% SDS-PAGE reducing gel
Recommended Concentration		5-10 µg/ml
Secondary Antibody		Dylight 800 labeled Antibody to Rabbit IgG (1:1), at 1:5000 dilution.
Explanation		Developed using Odyssey imaging system. Predicted band size : 21 kDa Observed band size : 23 kDa Additional bands at : 62 kDa (We are unsure as to the identity of these extra bands. They are possible non-specific bindings).

CBX1 Antibody, Rabbit PAb, Antigen Affinity Purified, Western blot



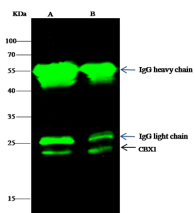
CBX1 Antibody, Rabbit PAb, Antigen Affinity Purified, Immunofluorescence

Immunofluorescence staining of CBX1 in HeLa cells. Cells were fixed with 4% PFA, permeabilized with 0.3% Triton X-100 in PBS, blocked with 10% serum, and incubated with rabbit anti-human CBX1 polyclonal antibody (1 µg/ml) at 4°C overnight. Then cells were st

Anti-CBX1 antibody



Catalog Number: 106465



CBX1 Antibody, Rabbit PAb, Antigen Affinity Purified, Immunoprecipitation

Lanes	A	B
Items		
Sample (whole cell lysate)	MCF7	293T
Sample quantity	0.5 mg	
IP antibody quantity	2 µg	
Immunomagnetic beads (Protein G)	60 µg	
Gel	13% SDS-PAGE reducing gel	
Primary antibody	KLIJ-SMCC-sinoA765 antibody at 10 µg/ml	
Secondary antibody	DyLight 800-labeled antibody to rabbit IgG (1:10), at 1:5000 dilution	