

# Anti-CD20/MS4A1 antibody



Catalog Number: 106402

## Product name

Anti-CD20/MS4A1 antibody

## Specificity

Human CD20 / MS4A1

## Antibody description

Rabbit monoclonal to CD20/MS4A1

## Preparation

This antibody was obtained from a rabbit immunized with purified, Human CD20 Transfected CHO Cells.

## Formulation

0.2 µm filtered solution in PBS with 5% trehalose

## Storage

This antibody can be stored at 2°C-8°C for one month without detectable loss of activity. Antibody products are stable for twelve months from date of receipt when stored at -20°C to -80°C. Preservative-Free.

Sodium azide is recommended to avoid contamination (final concentration 0.05%-0.1%). It is toxic to cells and should be disposed of properly. Avoid repeated freeze-thaw cycles.

## Clonality

Monoclonal

## Ig Type

Rabbit IgG

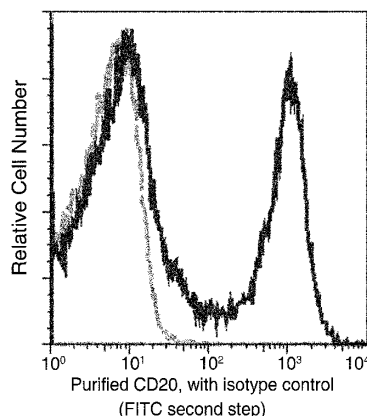
## Applications

FCM

## Dilutions

FCM: 0.5-2 µg/Test

## Validations



CD20 / MS4A1 Antibody, Rabbit MAb, Flow cytometric analysis