

Anti-Sox2 antibody

Catalog Number: 106394

Product name

Anti-Sox2 antibody

Specificity

Human Sox2

Antibody description

Rabbit monoclonal to Sox2

Preparation

This antibody was obtained from a rabbit immunized with a synthetic peptide corresponding to the N-terminus of the human Sox2.

Formulation

0.2 µm filtered solution in PBS

Storage

This antibody can be stored at 2°C-8°C for one month without detectable loss of activity. Antibody products are stable for twelve months from date of receipt when stored at -20°C to -80°C.

Preservative-Free.

Sodium azide is recommended to avoid contamination (final concentration 0.05%-0.1%). It is toxic to cells and should be disposed of properly. Avoid repeated freeze-thaw cycles.

Clonality

Monoclonal

Ig Type

Rabbit IgG

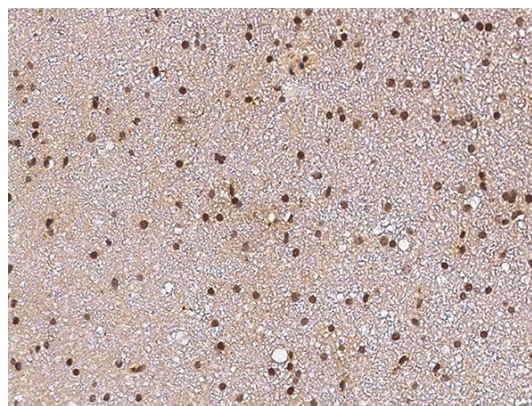
Applications

IHC-P

Dilutions

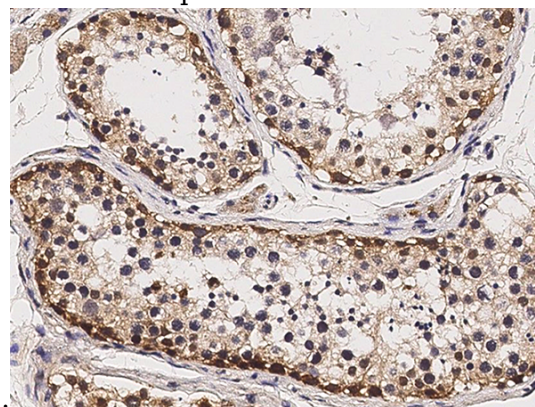
IHC-P: 1-10 µg/mL

Validations



Sox2 Antibody, Rabbit MAb,
Immunohistochemistry

Immunochemical staining of human SOX2 in human brain with rabbit monoclonal antibody (3 µg/mL, formalin-fixed paraffin embedded



sections).

Sox2 Antibody, Rabbit MAb,
Immunohistochemistry

Immunochemical staining of human SOX2 in human testis with rabbit monoclonal antibody (3 µg/mL, formalin-fixed paraffin embedded sections).