

Anti-CARM1 antibody



Catalog Number: 106390

Product name

Anti-CARM1 antibody

IHC-P: 0.1-2 µg/mL

ICC/IF: 0.5-1.5 µg/mL

Specificity

Human CARM1

Validations

Antibody description

Rabbit polyclonal to CARM1

Preparation

Produced in rabbits immunized with a synthetic peptide corresponding to the center region of the Human CARM1, and purified by antigen affinity chromatography.

Formulation

0.2 µm filtered solution in PBS

Storage

This antibody can be stored at 2°C-8°C for one month without detectable loss of activity. Antibody products are stable for twelve months from date of receipt when stored at -20°C to -80°C.

Preservative-Free.

Sodium azide is recommended to avoid contamination (final concentration 0.05%-0.1%). It is toxic to cells and should be disposed of properly. Avoid repeated freeze-thaw cycles.

Clonality

Polyclonal

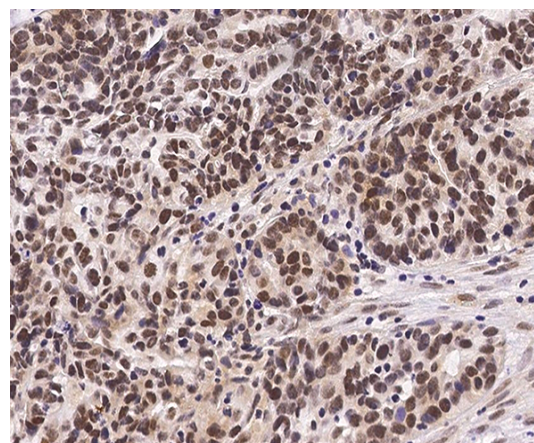
Ig Type

Rabbit IgG

Applications

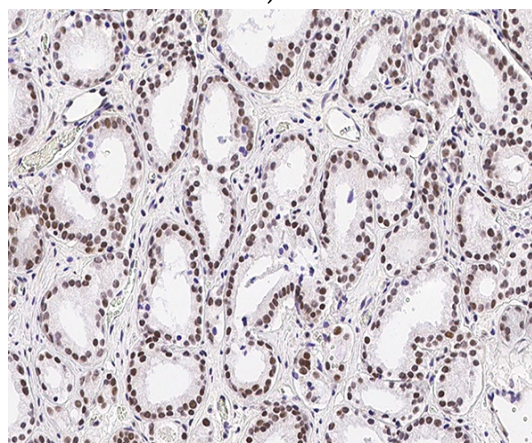
IHC-P, IF, ICC/IF

Dilutions



CARM1 Antibody, Rabbit PAb, Antigen Affinity Purified, Immunohistochemistry

Immunochemical staining of human CARM1 in human ovarian cancer with rabbit polyclonal antibody (0.5 µg/mL, formalin-fixed paraffin embedded sections).



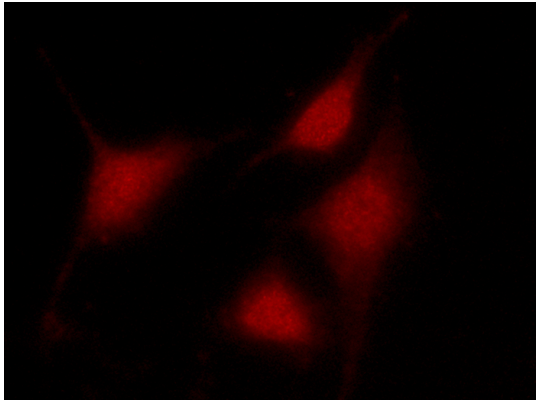
CARM1 Antibody, Rabbit PAb, Antigen Affinity Purified, Immunohistochemistry

Immunochemical staining of human CARM1 in human prostatic carcinoma with rabbit polyclonal antibody (0.5 µg/mL, formalin-fixed paraffin embedded sections).

Anti-CARM1 antibody



Catalog Number: 106390



CARM1 Antibody, Rabbit PAb, Antigen Affinity Purified, Immunofluorescence

Immunofluorescence staining of CARM1 in HeLa cells. Cells were fixed with 4% PFA, permeabilized with 0.3% Triton X-100 in PBS, blocked with 10% serum, and incubated with rabbit anti-human CARM1 polyclonal antibody (1 $\mu\text{g/ml}$) at 4°C overnight. Then cells were