

Anti-SPARCL1 / SPARC-like 1 antibody



Catalog Number: 106371

Product name

Anti-SPARCL1 / SPARC-like 1 antibody

Specificity

Human SPARCL1 / SPARC-like 1

Antibody description

Rabbit monoclonal to SPARCL1 / SPARC-like 1

Preparation

This antibody was obtained from a rabbit immunized with purified, recombinant Human SPARCL1 / SPARC-like 1 (rh SPARCL1 / SPARC-like 1; NP_004675.3; Met1-Phe664).

Formulation

0.2 µm filtered solution in PBS with 5% trehalose

Storage

This antibody can be stored at 2°C-8°C for one month without detectable loss of activity. Antibody products are stable for twelve months from date of receipt when stored at -20°C to -80°C.

Preservative-Free.

Sodium azide is recommended to avoid contamination (final concentration 0.05%-0.1%). It is toxic to cells and should be disposed of properly. Avoid repeated freeze-thaw cycles.

Clonality

Monoclonal

Ig Type

Rabbit IgG

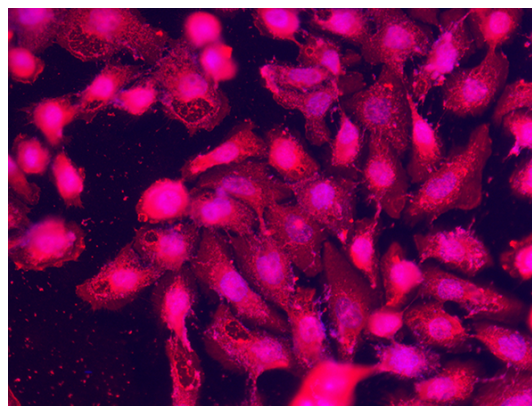
Applications

IF, ICC/IF

Dilutions

ICC/IF: 10-25 µg/mL

Validations



SPARCL1 / SPARC-like 1 Antibody, Rabbit MAb, Immunofluorescence

Immunofluorescence staining of Human SPARCL1 in A431 cells. Cells were fixed with 4% PFA, permeabilized with 1% Triton X-100 in PBS, blocked with 10% serum, and incubated with rabbit anti-Human SPARCL1 monoclonal antibody (15 µg/ml). Then cells were stained with the Alexa Fluor® 594-conjugated Goat Anti-rabbit IgG secondary antibody, counterstained with DAPI (blue). Positive staining was localized to cytoplasm.