

# Anti-MBD4 antibody



Catalog Number: 106286

## Product name

Anti-MBD4 antibody

## Specificity

Human MBD4

## Antibody description

Rabbit polyclonal to MBD4

## Preparation

Produced in rabbits immunized with a synthetic peptide corresponding to the center region of the Human MBD4, and purified by antigen affinity chromatography.

## Formulation

0.2 µm filtered solution in PBS

## Storage

This antibody can be stored at 2°C-8°C for one month without detectable loss of activity. Antibody products are stable for twelve months from date of receipt when stored at -20°C to -80°C.

Preservative-Free.

Sodium azide is recommended to avoid contamination (final concentration 0.05%-0.1%). It is toxic to cells and should be disposed of properly. Avoid repeated freeze-thaw cycles.

## Clonality

Polyclonal

## Ig Type

Rabbit IgG

## Applications

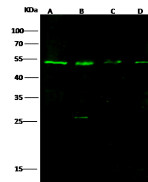
WB, IP

## Dilutions

WB: 10-20 µg/ml

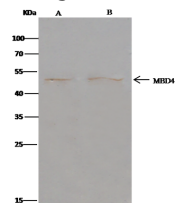
IP: 0.5-2 uL/mg of lysate

## Validations



Lanes	A	B	C	D
Items				
Sample (whole cell lysate)	HeLa	MCF7	K562	A549
Sample Volume (µg/lane)	30	30	30	30
Gel	13% SDS PAGE reducing gel			
Recommended Concentration	10-20µg/ml			
Secondary Antibody	DyLight 800 Labeled Antibody to Rabbit IgG (H+L), at 1:5000 dilution.			
Explanation	Developed using Odyssey imaging system. Predicted band size: 66 kDa Observed band size: 53 kDa Additional bands at: 25 kDa (We are unsure as to the identity of these extra bands. They are possible non-specific bindings).			

## MBD4 Antibody, Rabbit PAb, Antigen Affinity



Lanes	A	B
Items		
Sample (whole cell lysate)	HeLa	MCF7
Sample quantity	0.5 mg	
IP antibody quantity	2 µg	
Immunomagnetic beads	Protein G	
Gel	13% SDS-PAGE reducing gel	
Primary antibody	KL11-SMCC-SINOA762 antibody at 10 µg/ml	
Secondary antibody	Clean-Block IP Detection Reagent (HRP) at 1:500 dilution	

Purified, Western blot

## MBD4 Antibody, Rabbit PAb, Antigen Affinity

Purified, Immunoprecipitation