

Anti-UBE2M antibody



Catalog Number: 106285

Product name

Anti-UBE2M antibody

Immunogen

[Human UBE2M recombinant protein](#)

Specificity

Human UBE2M

Antibody description

Rabbit polyclonal to UBE2M

Preparation

Produced in rabbits immunized with purified, recombinant Human UBE2M (rh UBE2M; P61081; Met1-Lys183). UBE2M specific IgG was purified by Human UBE2M affinity chromatography.

Formulation

0.2 µm filtered solution in PBS

Storage

This antibody can be stored at 2°C-8°C for one month without detectable loss of activity. Antibody products are stable for twelve months from date of receipt when stored at -20°C to -80°C.

Preservative-Free.

Sodium azide is recommended to avoid contamination (final concentration 0.05%-0.1%). It is toxic to cells and should be disposed of properly. Avoid repeated freeze-thaw cycles.

Clonality

Polyclonal

Ig Type

Rabbit IgG

Applications

ELISA, WB, IP

Dilutions

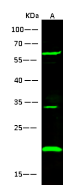
WB: 1-10 µg/ml

ELISA: 0.1-0.2 µg/ml

This antibody can be used at 0.1-0.2 µg/ml with the appropriate secondary reagents to detect Human UBE2M.

IP: 1-4 uL/mg of lysate

Validations



Lanes	A
Items	
Sample (whole cell lysate)	Jurkat
Sample Volume (µg/lane)	30
Gel	15% SDS-PAGE reducing gel
Recommended Concentration	1-10 µg/ml
Secondary Antibody	Dylight 800-labeled Antibody to Rabbit IgG (H+L) at 1:5000 dilution
Developed using Odyssey imaging system.	
Predicted band size: 17 kDa	
Observed band size: 20 kDa	
Explanation	Additional bands at: 60 kDa and 32 kDa (We are unsure as to the identity of these extra bands. They are possible non-specific bindings).

UBE2M Antibody, Rabbit PAb, Antigen Affinity Purified, Western blot