

## General Information

### Product name:

Anti-CNDP2 antibody

### Immunogen:

[Mouse CNDP2 \(His Tag\) recombinant protein](#)

### Applications:

IHC-P

### Specificity:

Mouse CNDP2

**Has cross-reactivity** in ELISA with Human CNDP2

### Antibody description:

Rabbit monoclonal to CNDP2

## Properties

### Preparation:

This antibody was obtained from a rabbit immunized with purified, recombinant Mouse CNDP2 (rM CNDP2; NP\_075638.2; Met1-Asn475).

### Formulation:

0.2 µm filtered solution in PBS with 5% trehalose

### Storage:

This antibody can be stored at 2°C-8°C for one month without detectable loss of activity. Antibody

products are stable for twelve months from date of receipt when stored at -20°C to -80°C.

Preservative-Free.

Sodium azide is recommended to avoid contamination (final concentration 0.05%-0.1%). It is toxic to cells and should be disposed of properly. Avoid repeated freeze-thaw cycles.

### Clonality:

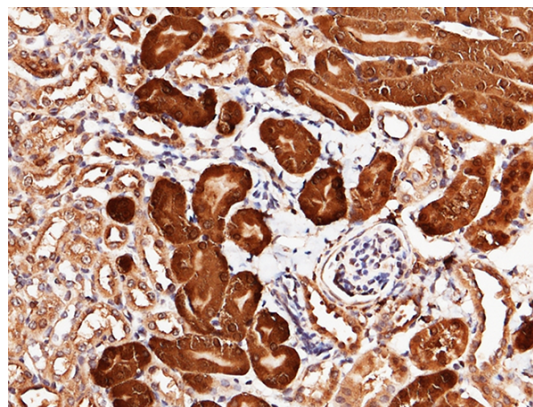
Monoclonal

**Ig Type:**Rabbit IgG

## Applications

IHC-P: 1-10 µg/mL

## Validations



CNDP2 Antibody, Rabbit MAb,  
Immunohistochemistry

Immunochemical staining of mouse CNDP2 in mouse kidney with rabbit monoclonal antibody (5 µg/mL, formalin-fixed paraffin embedded sections). Positive staining was localized to nephric tubule.