

Anti-STMN1 / Stathmin 1 antibody



Catalog Number: 106208

Product name

Anti-STMN1 / Stathmin 1 antibody

WB: 5-10 µg/ml

IHC-P: 0.1-2 µg/mL

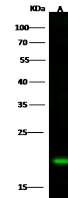
Specificity

Human STMN1 / Stathmin 1

Validations

Antibody description

Rabbit polyclonal to STMN1 / Stathmin 1



Items	Lanes	A
Sample		Rat brain tissue lysate
Sample Volume (µg/lane)		30
Gel		13% SDS-PAGE reducing gel
Recommended Concentration		5-10 µg/ml
Secondary Antibody		Dylight 800 labeled Antibody to Rabbit IgG (1:1), at 1:5000 dilution. Developed using Odyssey imaging system.
Explanation		Predicted band size : 19 kDa Observed band size : 19 kDa

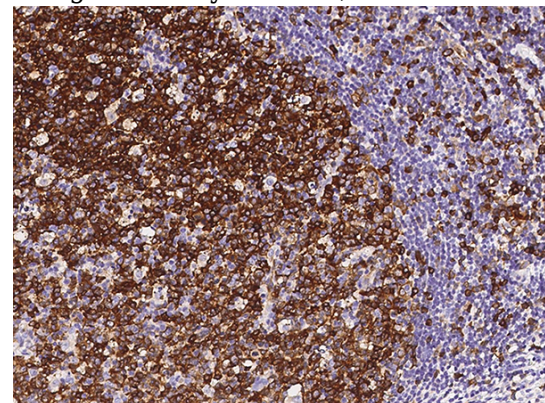
Preparation

Produced in rabbits immunized with a synthetic peptide corresponding to the center region of the Human STMN1 / Stathmin 1, and purified by antigen affinity chromatography.

STMN1 / Stathmin 1 Antibody, Rabbit PAb, Antigen Affinity Purified, Western blot

Formulation

0.2 µm filtered solution in PBS



Storage

This antibody can be stored at 2°C-8°C for one month without detectable loss of activity. Antibody products are stable for twelve months from date of receipt when stored at -20°C to -80°C.

Preservative-Free.

Sodium azide is recommended to avoid contamination (final concentration 0.05%-0.1%). It is toxic to cells and should be disposed of properly. Avoid repeated freeze-thaw cycles.

STMN1 / Stathmin 1 Antibody, Rabbit PAb, Antigen Affinity Purified, Immunohistochemistry

Clonality

Polyclonal

Immunochemical staining of human STMN1 in human tonsil with rabbit polyclonal antibody (0.5 µg/mL, formalin-fixed paraffin embedded sections).

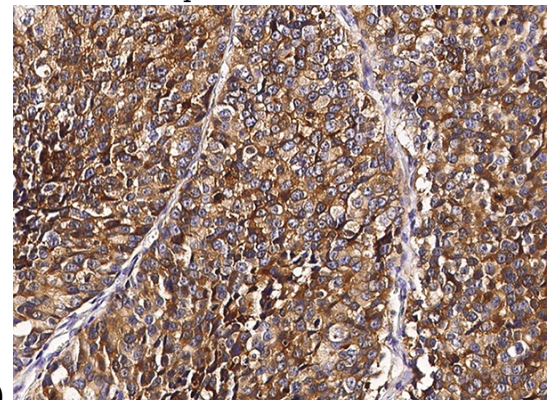
Ig Type

Rabbit IgG

Applications

WB, IHC-P

Dilutions



Anti-STMN1 / Stathmin 1 antibody



Catalog Number: 106208

STMN1 / Stathmin 1 Antibody, Rabbit PAb,
Antigen Affinity Purified, Immunohistochemistry

human breast carcinoma with rabbit polyclonal
antibody (0.5 µg/mL, formalin-fixed paraffin
embedded sections).

Immunochemical staining of human STMN1 in